



ELECTRONIC COPY

LABORATORY GROWN DIAMOND REPORT

LG530205168

June 6, 2022
IGI Report Number LG530205168

Description LABORATORY GROWN DIAMOND
Shape and Cutting Style ROUND BRILLIANT

Measurements 9.68 - 9.72 X 5.85 MM

GRADING RESULTS

Carat Weight 3.40 CARATS
Color Grade F
Clarity Grade VVS 2
Cut Grade EXCELLENT

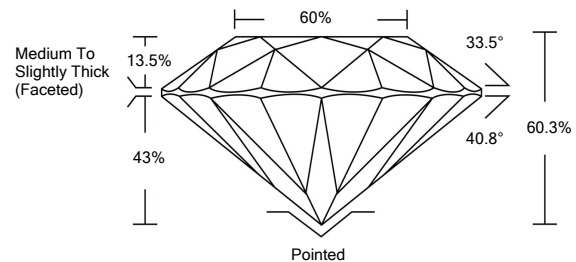
ADDITIONAL GRADING INFORMATION

Polish EXCELLENT
Symmetry EXCELLENT
Fluorescence NONE

Inscription(s) LABGROWN IGI LG530205168

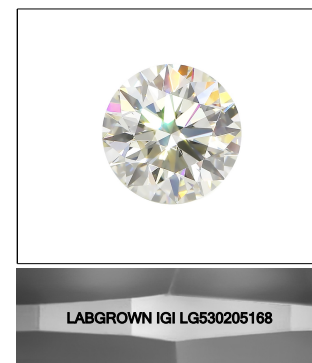
Comments: HEARTS & ARROWS
This Laboratory Grown Diamond was created by Chemical Vapor Deposition (CVD) growth process and may include post-growth treatment.
Type IIa

PROPORTIONS



GRADING SCALES

Table with 2 rows and 5 columns showing color and clarity grading scales. Color scale: CL (Colorless D-F), NC (Near Colorless G-J), FT (Faint K-M), VLT (Very Light N-R), LT (Light S-Z). Clarity scale: FL (Flawless Internally Flawless), IF (Internally Flawless), VVS (Very Very Slightly Included), VS (Very Slightly Included), SI (Slightly Included), I (Included).



LASERSCRIBE SM

Sample Image Used



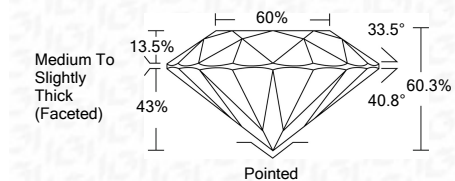
www.igi.org

June 6, 2022
IGI Report Number LG530205168
Description LABORATORY GROWN DIAMOND

Shape and Cutting Style ROUND BRILLIANT
Measurements 9.68 - 9.72 X 5.85 MM

GRADING RESULTS

Carat Weight 3.40 CARATS
Color Grade F
Clarity Grade VVS 2
Cut Grade EXCELLENT



ADDITIONAL GRADING INFORMATION

Polish EXCELLENT
Symmetry EXCELLENT
Fluorescence NONE
Inscription(s) LABGROWN IGI LG530205168

Comments: HEARTS & ARROWS
This Laboratory Grown Diamond was created by Chemical Vapor Deposition (CVD) growth process and may include post-growth treatment.
Type IIa



Summary table of report details: IGI Report No. LG530205168, ROUND BRILLIANT, 9.68 - 9.72 X 5.85 MM, 3.40 CARATS, F, VVS 2, EXCELLENT, 60.3%, 60%, Medium To Slightly Thick (Faceted), Pointed, EXCELLENT, EXCELLENT, NONE, LABGROWN IGI LG530205168.

HEARTS & ARROWS
This Laboratory Grown Diamond was created by Chemical Vapor Deposition (CVD) growth process and may include post-growth treatment.
Type IIa