



**INTERNATIONAL  
GEMOLOGICAL  
INSTITUTE**

**ELECTRONIC COPY**

**LABORATORY GROWN  
DIAMOND REPORT**

**IGI LABORATORY GROWN  
DIAMOND ID REPORT**

May 11, 2022  
IGI Report Number **LG524233142**  
**PEAR BRILLIANT**  
**6.59 X 4.06 X 2.59 MM**  
Carat Weight 0.42 CARAT  
Color Grade **FANCY VIVID PINK**  
Clarity Grade **SI 1**  
Polish **GOOD**  
Symmetry **EXCELLENT**  
Fluorescence **SLIGHT**  
Inscription(s) **LABGROWN IGI  
LG524233142**

Comments: This Laboratory Grown Diamond was created by High Pressure High Temperature (HPHT) growth process.  
Indications of post-growth treatment.

**LABORATORY GROWN DIAMOND REPORT**

**IGI LABORATORY GROWN DIAMOND IDENTIFICATION REPORT**

May 11, 2022  
IGI Report Number **LG524233142**  
Description **LABORATORY GROWN DIAMOND**  
Shape and Cutting Style **PEAR BRILLIANT**  
Measurements **6.59 X 4.06 X 2.59 MM**

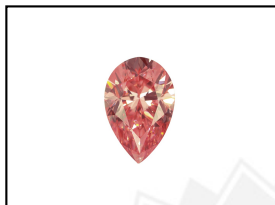
**GRADING RESULTS**

Carat Weight **0.42 CARAT**  
Color Grade **FANCY VIVID PINK**  
Clarity Grade **SI 1**

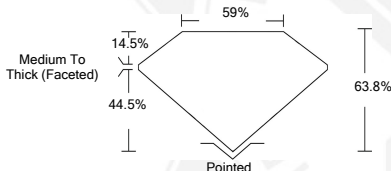
**ADDITIONAL GRADING INFORMATION**

Polish **GOOD**  
Symmetry **EXCELLENT**  
Fluorescence **SLIGHT**  
Inscription(s) **LABGROWN IGI LG524233142**

Comments: This Laboratory Grown Diamond was created by High Pressure High Temperature (HPHT) growth process.  
Indications of post-growth treatment.



**LASERSCRIBE<sup>SM</sup>**  
Sample Images Used



**IGI LABORATORY GROWN  
DIAMOND ID REPORT**

May 11, 2022  
IGI Report Number **LG524233142**  
**PEAR BRILLIANT**  
**6.59 X 4.06 X 2.59 MM**  
Carat Weight 0.42 CARAT  
Color Grade **FANCY VIVID PINK**  
Clarity Grade **SI 1**  
Polish **GOOD**  
Symmetry **EXCELLENT**  
Fluorescence **SLIGHT**  
Inscription(s) **LABGROWN IGI  
LG524233142**

Comments: This Laboratory Grown Diamond was created by High Pressure High Temperature (HPHT) growth process.  
Indications of post-growth treatment.

THIS DOCUMENT WAS PRODUCED WITH THE FOLLOWING SECURITY MEASURES: SPECIAL DOCUMENT PAPER, INK SCREENS, WATERMARK, BACKGROUND DESIGN, HOLOGRAM AND OTHER SECURITY FEATURES NOT LISTED AND DO EXCEEDED DOCUMENT SECURITY INDUSTRY GUIDELINES.

For Terms & Conditions and to verify this report, please visit [www.igi.org](http://www.igi.org)