



# INTERNATIONAL GEMOLOGICAL INSTITUTE

ELECTRONIC COPY

## LABORATORY GROWN DIAMOND REPORT

LG528298627

### IGI LABORATORY GROWN DIAMOND ID REPORT

May 13, 2022

IGI Report Number **LG528298627**

#### OVAL BRILLIANT

**6.54 X 4.47 X 2.73 MM**

Carat Weight	0.50 CARAT
Color Grade	FANCY VIVID ORANGY PINK
Clarity Grade	VS 2
Polish	EXCELLENT
Symmetry	EXCELLENT
Fluorescence	STRONG
Inscription(s)	LABGROWN IGI LG528298627

Comments: This Laboratory Grown Diamond was created by High Pressure High Temperature (HPHT) growth process.  
Indications of post-growth treatment.

## LABORATORY GROWN DIAMOND REPORT

### IGI LABORATORY GROWN DIAMOND IDENTIFICATION REPORT

May 13, 2022	LG528298627
IGI Report Number	
Description	LABORATORY GROWN DIAMOND
Shape and Cutting Style	OVAL BRILLIANT
Measurements	6.54 X 4.47 X 2.73 MM

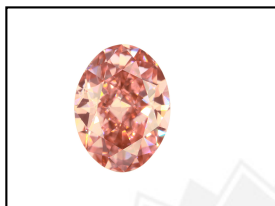
### GRADING RESULTS

Carat Weight	0.50 CARAT
Color Grade	FANCY VIVID ORANGY PINK
Clarity Grade	VS 2

### ADDITIONAL GRADING INFORMATION

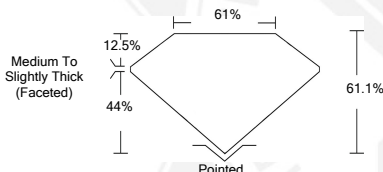
Polish	EXCELLENT
Symmetry	EXCELLENT
Fluorescence	STRONG
Inscription(s)	LABGROWN IGI LG528298627

Comments: This Laboratory Grown Diamond was created by High Pressure High Temperature (HPHT) growth process.  
Indications of post-growth treatment.



LABGROWN IGI LG528298627

**LASERSCRIBE<sup>SM</sup>**  
Sample Images Used



### IGI LABORATORY GROWN DIAMOND ID REPORT

May 13, 2022

IGI Report Number **LG528298627**

#### OVAL BRILLIANT

**6.54 X 4.47 X 2.73 MM**

Carat Weight	0.50 CARAT
Color Grade	FANCY VIVID ORANGY PINK
Clarity Grade	VS 2
Polish	EXCELLENT
Symmetry	EXCELLENT
Fluorescence	STRONG
Inscription(s)	LABGROWN IGI LG528298627

Comments: This Laboratory Grown Diamond was created by High Pressure High Temperature (HPHT) growth process.  
Indications of post-growth treatment.



THIS DOCUMENT WAS PRODUCED WITH THE FOLLOWING SECURITY MEASURES: SPECIAL DOCUMENT PAPER, INK SCREENS, WATERMARK, BACKGROUND DESIGN, HOLOGRAM AND OTHER SECURITY FEATURES NOT LISTED AND DO EXCEED DOCUMENT SECURITY INDUSTRY GUIDELINES.

For terms & conditions and to verify this report, please visit [www.igi.org](http://www.igi.org)