



ELECTRONIC COPY

LABORATORY GROWN DIAMOND REPORT

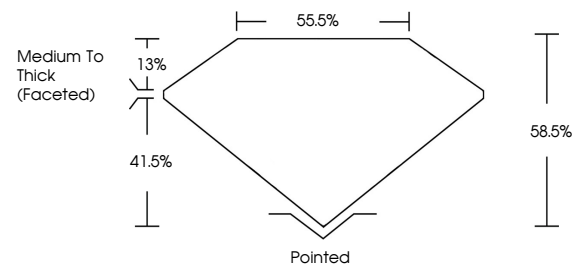
LG547242458

September 30, 2022
 IGI Report Number **LG547242458**
 Description **LABORATORY GROWN
DIAMOND**
 Shape and Cutting Style **HEART BRILLIANT**
 Measurements **7.96 X 9.06 X 5.30 MM**

GRADING RESULTS

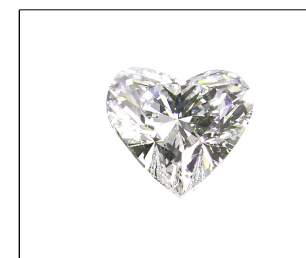
Carat Weight **2.18 CARATS**
 Color Grade **G**
 Clarity Grade **VS 1**
 Cut Grade **VERY GOOD**

PROPORTIONS



GRADING SCALES

COLOR GRADING SCALE	CL	NC	FT	VLT	LT	
	COLORLESS D-F	NEAR COLORLESS G-J	FAINT K-M	VERY LIGHT N-R	LIGHT S-Z	
CLARITY (10x) GRADING SCALE	FL	IF	VVS	VS	SI	I
	FLAWLESS INTERNALLY FLAWLESS	VERY VERY SLIGHTLY INCLUDED	VERY SLIGHTLY INCLUDED	SLIGHTLY INCLUDED	INCLUDED	



LABGROWN IGI LG547242458

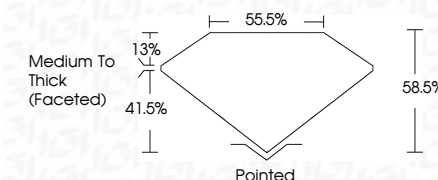
LASERSCRIBESM

Sample Image Used

September 30, 2022
 IGI Report Number **LG547242458**
 Description **LABORATORY GROWN
DIAMOND**
 Shape and Cutting Style **HEART BRILLIANT**
 Measurements **7.96 X 9.06 X 5.30 MM**

GRADING RESULTS

Carat Weight **2.18 CARATS**
 Color Grade **G**
 Clarity Grade **VS 1**
 Cut Grade **VERY GOOD**



ADDITIONAL GRADING INFORMATION

Polish **EXCELLENT**
 Symmetry **EXCELLENT**
 Fluorescence **NONE**
 Inscription(s) **LABGROWN IGI LG547242458**

Comments: This Laboratory Grown Diamond was created by Chemical Vapor Deposition (CVD) growth process and may include post-growth treatment.
 Type IIa

ADDITIONAL GRADING INFORMATION

Polish **EXCELLENT**
 Symmetry **EXCELLENT**
 Fluorescence **NONE**
 Inscription(s) **LABGROWN IGI LG547242458**
 Comments: This Laboratory Grown Diamond was created by Chemical Vapor Deposition (CVD) growth process and may include post-growth treatment.
 Type IIa



September 30, 2022
 IGI Report No LG547242458
HEART BRILLIANT
 7.96 X 9.06 X 5.30 MM
 Carat Weight **2.18 CARATS**
 Color Grade **G**
 Clarity Grade **VS 1**
 Cut Grade **VERY GOOD**
 Depth **58.5%**
 Table **55.5%**
 Girdle **Medium To Thick (Faceted)**
 Culet **Pointed**
 Polish **EXCELLENT**
 Symmetry **EXCELLENT**
 Fluorescence **NONE**
 Inscription(s) **LABGROWN IGI LG547242458**
 Comments: This Laboratory Grown Diamond was created by Chemical Vapor Deposition (CVD) growth process and may include post-growth treatment.
 Type IIa