



ELECTRONIC COPY

LABORATORY GROWN DIAMOND REPORT

LG533279687

June 28, 2022 IGI Report Number LG533279687

Description LABORATORY GROWN DIAMOND

Shape and Cutting Style SQUARE CUSHION MODIFIED BRILLIANT

Measurements 9.54 X 9.45 X 6.21 MM

GRADING RESULTS

Carat Weight 4.19 CARATS

Color Grade G

Clarity Grade VS 1

ADDITIONAL GRADING INFORMATION

Polish EXCELLENT

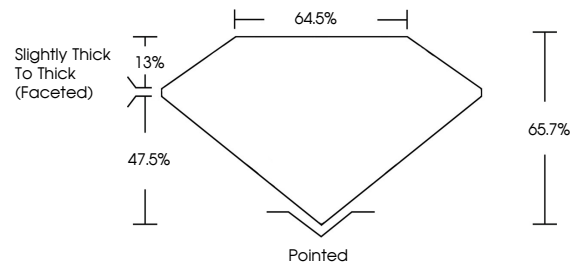
Symmetry EXCELLENT

Fluorescence NONE

Inscription(s) LABGROWN IGI LG533279687

Comments: This Laboratory Grown Diamond was created by Chemical Vapor Deposition (CVD) growth process and may include post-growth treatment. Type IIa

PROPORTIONS



LABORATORY GROWN DIAMOND REPORT

GRADING SCALES

COLOR GRADING SCALE	CL	NC	FT	VL	LT	
	COLORLESS D-F	NEAR COLORLESS G-J	FAINT K-M	VERY LIGHT N-R	LIGHT S-Z	
CLARITY (10x) GRADING SCALE	FL	IF	VVS	VS	SI	I
	FLAWLESS INTERNALLY FLAWLESS	VERY VERY SLIGHTLY INCLUDED	VERY SLIGHTLY INCLUDED	SLIGHTLY INCLUDED	INCLUDED	INCLUDED

June 28, 2022 IGI Report Number LG533279687 Description LABORATORY GROWN DIAMOND

Shape and Cutting Style SQUARE CUSHION MODIFIED BRILLIANT

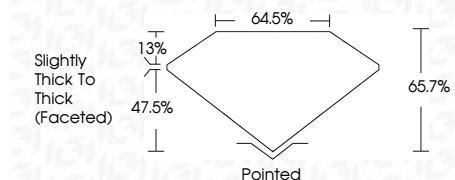
Measurements 9.54 X 9.45 X 6.21 MM

GRADING RESULTS

Carat Weight 4.19 CARATS

Color Grade G

Clarity Grade VS 1



ADDITIONAL GRADING INFORMATION

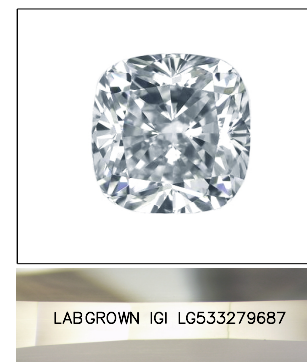
Polish EXCELLENT

Symmetry EXCELLENT

Fluorescence NONE

Inscription(s) LABGROWN IGI LG533279687

Comments: This Laboratory Grown Diamond was created by Chemical Vapor Deposition (CVD) growth process and may include post-growth treatment. Type IIa



LABGROWN IGI LG533279687

LASERSCRIBE SM

Sample Image Used



June 28, 2022 IGI Report No LG533279687
 SQUARE CUSHION MODIFIED BRILLIANT
 Carat Weight 9.54 X 9.45 X 6.21 MM 4.19 CARATS
 Color Grade G
 Clarity Grade VS 1
 Depth 65.7%
 Table 64.5%
 Girdle Slightly Thick To Thick (Faceted)
 Culet Pointed
 Polish EXCELLENT
 Symmetry EXCELLENT
 Fluorescence NONE
 Inscription(s) LABGROWN IGI LG533279687
 Comments: This Laboratory Grown Diamond was created by Chemical Vapor Deposition (CVD) growth process and may include post-growth treatment. Type IIa