



**ELECTRONIC COPY**

**LABORATORY GROWN DIAMOND REPORT**

LG542205245

September 2, 2022  
 IGI Report Number **LG542205245**  
 Description **LABORATORY GROWN  
DIAMOND**  
 Shape and Cutting Style **CUT CORNERED RECTANGULAR  
MODIFIED BRILLIANT**  
 Measurements **8.67 X 6.18 X 4.41 MM**

**GRADING RESULTS**

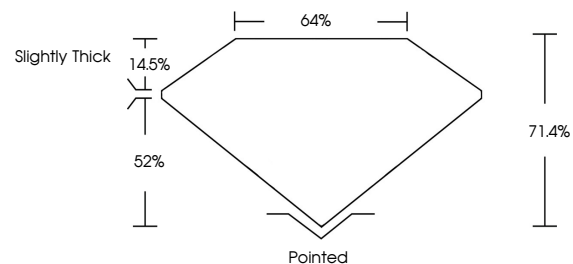
Carat Weight **2.01 CARATS**  
 Color Grade **H**  
 Clarity Grade **VS 2**

**ADDITIONAL GRADING INFORMATION**

Polish **EXCELLENT**  
 Symmetry **VERY GOOD**  
 Fluorescence **NONE**  
 Inscription(s) **LABGROWN IGI LG542205245**

Comments: This Laboratory Grown Diamond was created by Chemical Vapor Deposition (CVD) growth process and may include post-growth treatment. Type IIa

**PROPORTIONS**

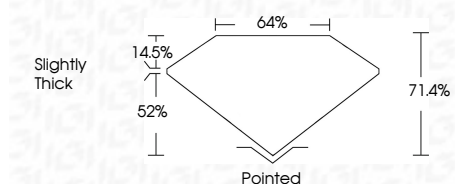


**LABORATORY GROWN  
DIAMOND REPORT**

September 2, 2022  
 IGI Report Number **LG542205245**  
 Description **LABORATORY GROWN  
DIAMOND**  
 Shape and Cutting Style **CUT CORNERED  
RECTANGULAR MODIFIED  
BRILLIANT**  
 Measurements **8.67 X 6.18 X 4.41 MM**

**GRADING RESULTS**

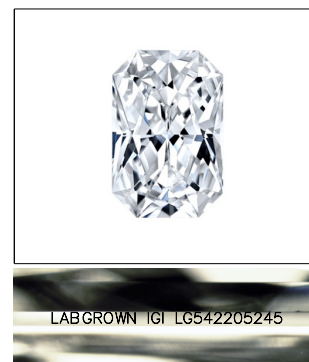
Carat Weight **2.01 CARATS**  
 Color Grade **H**  
 Clarity Grade **VS 2**



**ADDITIONAL GRADING INFORMATION**

Polish **EXCELLENT**  
 Symmetry **VERY GOOD**  
 Fluorescence **NONE**  
 Inscription(s) **LABGROWN IGI LG542205245**

Comments: This Laboratory Grown Diamond was created by Chemical Vapor Deposition (CVD) growth process and may include post-growth treatment. Type IIa



**LASERSCRIBE<sup>SM</sup>**  
Sample Image Used



**IGI**

September 2, 2022  
 IGI Report No **LG542205245**  
**CUT CORNERED RECT. MODIFIED**  
**8.67 X 6.18 X 4.41 MM**  
 Carat Weight **2.01 CARATS**  
 Color Grade **H**  
 Clarity Grade **VS 2**  
 Depth **71.4%**  
 Table **64%**  
 Girdle **Slightly Thick**  
 Culet **Pointed**  
 Polish **EXCELLENT**  
 Symmetry **VERY GOOD**  
 Fluorescence **NONE**  
 Inscription(s) **LABGROWN IGI LG542205245**  
 Comments: **This Laboratory Grown Diamond was created by Chemical Vapor Deposition (CVD) growth process and may include post-growth treatment. Type IIa**