



ELECTRONIC COPY

LABORATORY GROWN DIAMOND REPORT

LG547242466

October 3, 2022
 IGI Report Number **LG547242466**
 Description **LABORATORY GROWN
DIAMOND**
 Shape and Cutting Style **PRINCESS CUT**
 Measurements **5.48 X 5.35 X 3.93 MM**

GRADING RESULTS

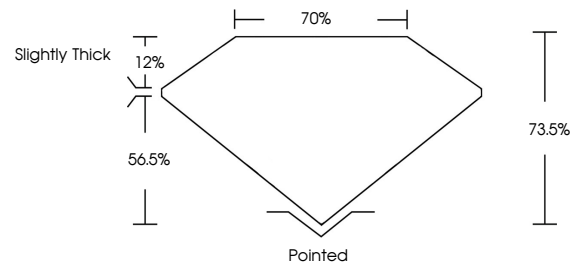
Carat Weight **1.03 CARAT**
 Color Grade **G**
 Clarity Grade **VS 1**
 Cut Grade **VERY GOOD**

ADDITIONAL GRADING INFORMATION

Polish **EXCELLENT**
 Symmetry **EXCELLENT**
 Fluorescence **NONE**
 Inscription(s) **LABGROWN IGI LG547242466**

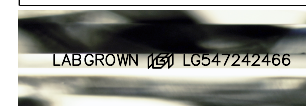
Comments: This Laboratory Grown Diamond was created by Chemical Vapor Deposition (CVD) growth process and may include post-growth treatment. Type IIa

PROPORTIONS



GRADING SCALES

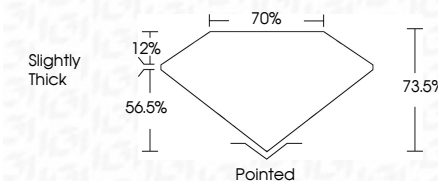
COLOR GRADING SCALE	CL	NC	FT	VLT	LT	
	COLORLESS D-F	NEAR COLORLESS G-J	FAINT K-M	VERY LIGHT N-R	LIGHT S-Z	
CLARITY (10x) GRADING SCALE	FL	IF	VVS	VS	SI	I
	FLAWLESS INTERNALLY FLAWLESS	VERY VERY SLIGHTLY INCLUDED	VERY SLIGHTLY INCLUDED	SLIGHTLY INCLUDED	INCLUDED	INCLUDED



LASERSCRIBESM

Sample Image Used

October 3, 2022
 IGI Report Number **LG547242466**
 Description **LABORATORY GROWN
DIAMOND**
 Shape and Cutting Style **PRINCESS CUT**
 Measurements **5.48 X 5.35 X 3.93 MM**
GRADING RESULTS
 Carat Weight **1.03 CARAT**
 Color Grade **G**
 Clarity Grade **VS 1**
 Cut Grade **VERY GOOD**



ADDITIONAL GRADING INFORMATION

Polish **EXCELLENT**
 Symmetry **EXCELLENT**
 Fluorescence **NONE**
 Inscription(s) **LABGROWN IGI LG547242466**

Comments: This Laboratory Grown Diamond was created by Chemical Vapor Deposition (CVD) growth process and may include post-growth treatment. Type IIa



IGI



October 3, 2022	1.03 CARAT	G	VS 1	73.5%	70%	Slightly Thick	Pointed
IGI Report No LG547242466			VERY GOOD				EXCELLENT
PRINCESS CUT							EXCELLENT
5.48 X 5.35 X 3.93 MM							NONE
Carat Weight							LABGROWN IGI LG547242466
Color Grade							
Clarity Grade							
Cut Grade							
Depth							
Table							
Grade							
Culet							
Polish							
Symmetry							
Fluorescence							
Inscription(s)							
Comments:	This Laboratory Grown Diamond was created by Chemical Vapor Deposition (CVD) growth process and may include post-growth treatment. Type IIa						