



ELECTRONIC COPY

LABORATORY GROWN DIAMOND REPORT

LG547242428

September 30, 2022
 IGI Report Number **LG547242428**
 Description **LABORATORY GROWN
DIAMOND**
 Shape and Cutting Style **PRINCESS CUT**
 Measurements **5.73 X 5.53 X 4.02 MM**

GRADING RESULTS

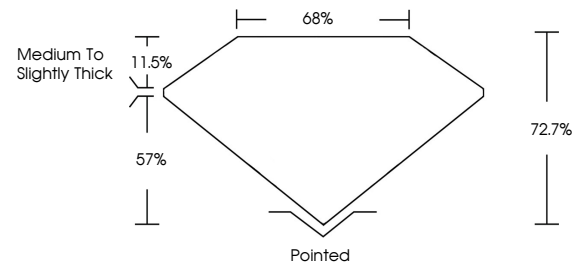
Carat Weight **1.11 CARAT**
 Color Grade **E**
 Clarity Grade **VS 1**
 Cut Grade **EXCELLENT**

ADDITIONAL GRADING INFORMATION

Polish **EXCELLENT**
 Symmetry **EXCELLENT**
 Fluorescence **NONE**
 Inscription(s) **LABGROWN IGI LG547242428**

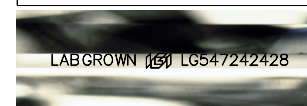
Comments: This Laboratory Grown Diamond was created by Chemical Vapor Deposition (CVD) growth process and may include post-growth treatment. Type IIa

PROPORTIONS



GRADING SCALES

COLOR GRADING SCALE	CL	NC	FT	VLT	LT	
	COLORLESS D-F	NEAR COLORLESS G-J	FAINT K-M	VERY LIGHT N-R	LIGHT S-Z	
CLARITY (10x) GRADING SCALE	FL	IF	VVS	VS	SI	I
	FLAWLESS INTERNALLY FLAWLESS	VERY VERY SLIGHTLY INCLUDED	VERY SLIGHTLY INCLUDED	SLIGHTLY INCLUDED	INCLUDED	INCLUDED

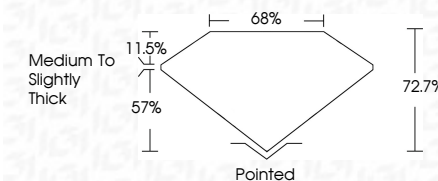


LASERSCRIBESM

Sample Image Used



September 30, 2022
 IGI Report Number **LG547242428**
 Description **LABORATORY GROWN
DIAMOND**
 Shape and Cutting Style **PRINCESS CUT**
 Measurements **5.73 X 5.53 X 4.02 MM**
GRADING RESULTS
 Carat Weight **1.11 CARAT**
 Color Grade **E**
 Clarity Grade **VS 1**
 Cut Grade **EXCELLENT**



ADDITIONAL GRADING INFORMATION

Polish **EXCELLENT**
 Symmetry **EXCELLENT**
 Fluorescence **NONE**
 Inscription(s) **LABGROWN IGI LG547242428**

Comments: This Laboratory Grown Diamond was created by Chemical Vapor Deposition (CVD) growth process and may include post-growth treatment. Type IIa



IGI

September 30, 2022
 IGI Report No **LG547242428**
PRINCESS CUT
 Carat Weight **1.11 CARAT**
 Color Grade **E**
 Clarity Grade **VS 1**
 Cut Grade **EXCELLENT**
 Depth **72.7%**
 Table **68%**
 Girdle **Medium To Slightly Thick**
 Culet **Pointed**
 Polish **EXCELLENT**
 Symmetry **EXCELLENT**
 Fluorescence **NONE**
 Inscription(s) **LABGROWN IGI LG547242428**
 Comments: This Laboratory Grown Diamond was created by Chemical Vapor Deposition (CVD) growth process and may include post-growth treatment. Type IIa