



ELECTRONIC COPY

LABORATORY GROWN DIAMOND REPORT

LG546289836

September 28, 2022
 IGI Report Number **LG546289836**
 Description **LABORATORY GROWN
DIAMOND**
 Shape and Cutting Style **PRINCESS CUT**
 Measurements **6.27 X 6.23 X 4.43 MM**

GRADING RESULTS

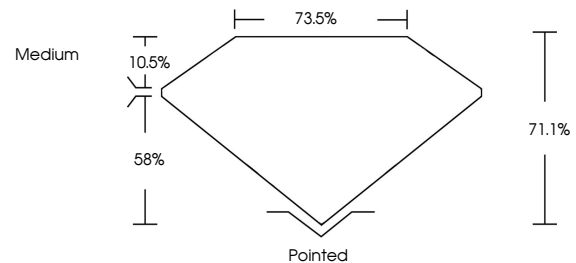
Carat Weight **1.50 CARAT**
 Color Grade **F**
 Clarity Grade **VVS 2**
 Cut Grade **EXCELLENT**

ADDITIONAL GRADING INFORMATION

Polish **EXCELLENT**
 Symmetry **EXCELLENT**
 Fluorescence **NONE**
 Inscription(s) **LABGROWN IGI LG546289836**

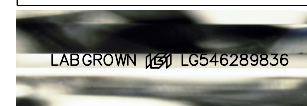
Comments: This Laboratory Grown Diamond was created by Chemical Vapor Deposition (CVD) growth process and may include post-growth treatment. Type IIa

PROPORTIONS



GRADING SCALES

COLOR GRADING SCALE	CL	NC	FT	VL	LT	
	COLORLESS D-F	NEAR COLORLESS G-J	FAINT K-M	VERY LIGHT N-R	LIGHT S-Z	
CLARITY (10x) GRADING SCALE	FL	IF	VVS	VS	SI	I
	FLAWLESS INTERNALLY FLAWLESS		VERY VERY SLIGHTLY INCLUDED	VERY SLIGHTLY INCLUDED	SLIGHTLY INCLUDED	INCLUDED

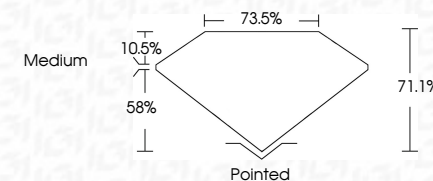


LASERSCRIBESM

Sample Image Used



September 28, 2022
 IGI Report Number **LG546289836**
 Description **LABORATORY GROWN
DIAMOND**
 Shape and Cutting Style **PRINCESS CUT**
 Measurements **6.27 X 6.23 X 4.43 MM**
GRADING RESULTS
 Carat Weight **1.50 CARAT**
 Color Grade **F**
 Clarity Grade **VVS 2**
 Cut Grade **EXCELLENT**



ADDITIONAL GRADING INFORMATION

Polish **EXCELLENT**
 Symmetry **EXCELLENT**
 Fluorescence **NONE**
 Inscription(s) **LABGROWN IGI LG546289836**

Comments: This Laboratory Grown Diamond was created by Chemical Vapor Deposition (CVD) growth process and may include post-growth treatment. Type IIa



IGI

September 28, 2022	1.50 CARAT	F	VVS 2	71.1%	Medium	Pointed
IGI Report No LG546289836			EXCELLENT			EXCELLENT
PRINCESS CUT						EXCELLENT
6.27 X 6.23 X 4.43 MM						NONE
Carat Weight						LABGROWN IGI LG546289836
Color Grade						
Clarity Grade						
Cut Grade						
Depth						
Table						
Grade						
Culet						
Polish						
Symmetry						
Fluorescence						
Inscription(s)						
Comments:	This Laboratory Grown Diamond was created by Chemical Vapor Deposition (CVD) growth process and may include post-growth treatment. Type IIa					

