



**ELECTRONIC COPY**

**LABORATORY GROWN DIAMOND REPORT**

LG539244958

August 22, 2022  
IGI Report Number **LG539244958**

Description **LABORATORY GROWN  
DIAMOND**  
Shape and Cutting Style **EMERALD CUT**  
Measurements **8.55 X 6.12 X 4.24 MM**

**GRADING RESULTS**

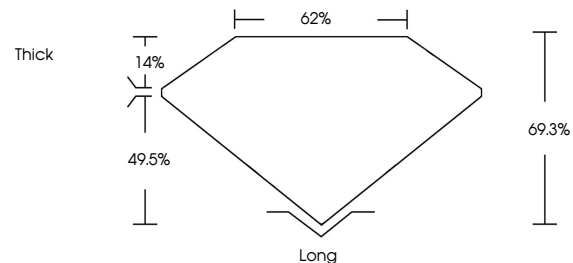
Carat Weight **2.17 CARATS**  
Color Grade **H**  
Clarity Grade **VS 2**

**ADDITIONAL GRADING INFORMATION**

Polish **EXCELLENT**  
Symmetry **EXCELLENT**  
Fluorescence **NONE**

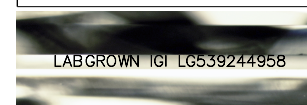
Inscription(s) **LABGROWN IGI LG539244958**  
Comments: This Laboratory Grown Diamond was created by Chemical Vapor Deposition (CVD) growth process and may include post-growth treatment. Type IIa

**PROPORTIONS**



**GRADING SCALES**

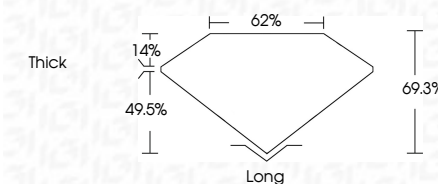
COLOR GRADING SCALE	CL	NC	FT	VLT	LT	
	COLORLESS D-F	NEAR COLORLESS G-J	FAINT K-M	VERY LIGHT N-R	LIGHT S-Z	
CLARITY (10x) GRADING SCALE	FL	IF	VVS	VS	SI	I
	FLAWLESS INTERNALLY FLAWLESS	VERY VERY SLIGHTLY INCLUDED	VERY SLIGHTLY INCLUDED	SLIGHTLY INCLUDED	INCLUDED	



**LASERSCRIBE<sup>SM</sup>**

Sample Image Used

August 22, 2022  
IGI Report Number **LG539244958**  
Description **LABORATORY GROWN  
DIAMOND**  
Shape and Cutting Style **EMERALD CUT**  
Measurements **8.55 X 6.12 X 4.24 MM**  
**GRADING RESULTS**  
Carat Weight **2.17 CARATS**  
Color Grade **H**  
Clarity Grade **VS 2**



**ADDITIONAL GRADING INFORMATION**

Polish **EXCELLENT**  
Symmetry **EXCELLENT**  
Fluorescence **NONE**  
Inscription(s) **LABGROWN IGI LG539244958**

Comments: This Laboratory Grown Diamond was created by Chemical Vapor Deposition (CVD) growth process and may include post-growth treatment. Type IIa



**IGI**

August 22, 2022	IGI Report No LG539244958	2.17 CARATS	H	VS 2	69.3%	62%	14%	49.5%	Thick	Long	EXCELLENT	EXCELLENT	NONE	LABGROWN IGI LG539244958	Comments: This Laboratory Grown Diamond was created by Chemical Vapor Deposition (CVD) growth process and may include post-growth treatment. Type IIa
EMERALD CUT	8.55 X 6.12 X 4.24 MM	Color Grade	Clarity Grade	Depth	Table	Crown	Pavilion	Color	Polish	Symmetry	Fluorescence	Inscription(s)	Comments:		

