



ELECTRONIC COPY

LABORATORY GROWN DIAMOND REPORT

February 7, 2023
IGI Report Number **LG567353853**
Description **LABORATORY GROWN
DIAMOND**
Shape and Cutting Style **PEAR BRILLIANT**
Measurements **15.65 X 9.11 X 5.92 MM**

GRADING RESULTS

Carat Weight **5.01 CARATS**
Color Grade **G**
Clarity Grade **VS 2**

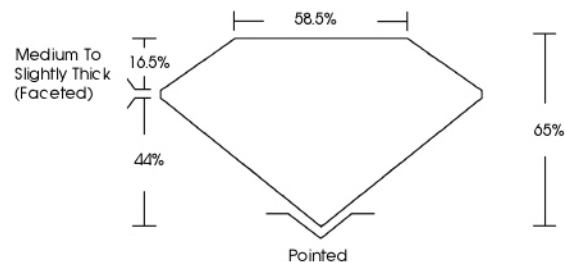
ADDITIONAL GRADING INFORMATION

Polish **EXCELLENT**
Symmetry **EXCELLENT**
Fluorescence **NONE**

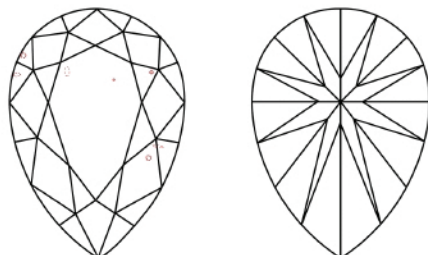
Inscription(s) **LG567353853**

Comments: This Laboratory Grown Diamond was created by Chemical Vapor Deposition (CVD) growth process and may include post-growth treatment. Type IIa

PROPORTIONS



CLARITY CHARACTERISTICS



KEY TO SYMBOLS

Red symbols indicate internal characteristics.
Green symbols indicate external characteristics.

GRADING SCALES

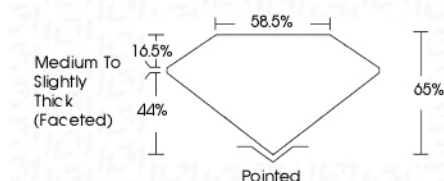
CLARITY

IF	VVS ¹⁻²	VS ¹⁻²	SI ¹⁻²	I ¹⁻²
Internally Flawless	Very Very Slightly Included	Very Slightly Included	Slightly Included	Included

COLOR

D	E	F	G	H	I	J	Faint	Very Light	Light

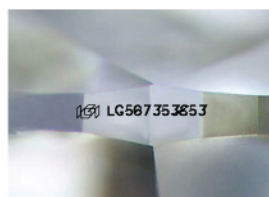
February 7, 2023
IGI Report Number **LG567353853**
Description **LABORATORY GROWN
DIAMOND**
Shape and Cutting Style **PEAR BRILLIANT**
Measurements **15.65 X 9.11 X 5.92 MM**
GRADING RESULTS
Carat Weight **5.01 CARATS**
Color Grade **G**
Clarity Grade **VS 2**



ADDITIONAL GRADING INFORMATION

Polish **EXCELLENT**
Symmetry **EXCELLENT**
Fluorescence **NONE**
Inscription(s) **LG567353853**

Comments: This Laboratory Grown Diamond was created by Chemical Vapor Deposition (CVD) growth process and may include post-growth treatment. Type IIa



Sample Image Used



IGI

February 7, 2023
IGI Report No. **LG567353853**
PEAR BRILLIANT
15.65 X 9.11 X 5.92 MM
Carat Weight **5.01 CARATS**
Color Grade **G**
Clarity Grade **VS 2**
Depth **44%**
Table **16.5%**
Girdle **58.5%**
Medium to Slightly Thick (Faceted)
Culet Polished
Polish **EXCELLENT**
Symmetry **EXCELLENT**
Fluorescence **NONE**
Inscription(s) **LG567353853**

Comments: This Laboratory Grown Diamond was created by Chemical Vapor Deposition (CVD) growth process and may include post-growth treatment. Type IIa