



ELECTRONIC COPY

LABORATORY GROWN DIAMOND REPORT

LG619468981
Report verification at igi.org

**LABORATORY GROWN
DIAMOND REPORT**

LABORATORY GROWN DIAMOND REPORT

LABORATORY GROWN DIAMOND REPORT

February 2, 2024
IGI Report Number **LG619468981**
Description **LABORATORY GROWN
DIAMOND**
Shape and Cutting Style **MARQUISE BRILLIANT**
Measurements **17.94 X 8.96 X 5.53 MM**

GRADING RESULTS

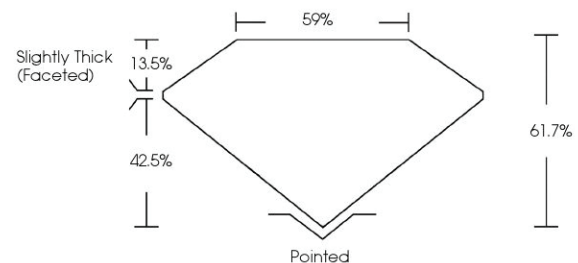
Carat Weight **5.19 CARATS**
Color Grade **G**
Clarity Grade **VS 1**

ADDITIONAL GRADING INFORMATION

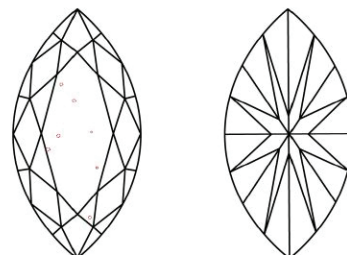
Polish **EXCELLENT**
Symmetry **EXCELLENT**
Fluorescence **NONE**
Inscription(s) **LG619468981**

Comments: This Laboratory Grown Diamond was created by Chemical Vapor Deposition (CVD) growth process and may include post-growth treatment. Type IIa

PROPORTIONS



CLARITY CHARACTERISTICS



KEY TO SYMBOLS

Red symbols indicate internal characteristics.
Green symbols indicate external characteristics.

GRADING SCALES

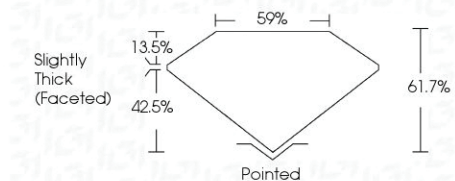
CLARITY

IF	VVS ¹⁻²	VS ¹⁻²	SI ¹⁻²	I ¹⁻³
Internally Flawless	Very Very Slightly Included	Very Slightly Included	Slightly Included	Included

COLOR

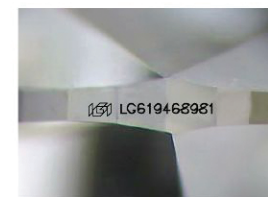
D	E	F	G	H	I	J	Faint	Very Light	Light

February 2, 2024
IGI Report Number **LG619468981**
Description **LABORATORY GROWN
DIAMOND**
Shape and Cutting Style **MARQUISE BRILLIANT**
Measurements **17.94 X 8.96 X 5.53 MM**
GRADING RESULTS
Carat Weight **5.19 CARATS**
Color Grade **G**
Clarity Grade **VS 1**



ADDITIONAL GRADING INFORMATION

Polish **EXCELLENT**
Symmetry **EXCELLENT**
Fluorescence **NONE**
Inscription(s) **LG619468981**
Comments: This Laboratory Grown Diamond was created by Chemical Vapor Deposition (CVD) growth process and may include post-growth treatment. Type IIa



Sample Image Used



IGI

February 2, 2024
IGI Report No. LG619468981
MARQUISE BRILLIANT
17.94 X 8.96 X 5.53 MM
Carat Weight **5.19 CARATS**
Color Grade **G**
Clarity Grade **VS 1**
Depth **61.7%**
Table **59%**
Girdle **Slightly Thick (Faceted)**
Culet **Pointed**
Polish **EXCELLENT**
Symmetry **EXCELLENT**
Fluorescence **NONE**
Inscription(s) **LG619468981**

Comments: This Laboratory Grown Diamond was created by Chemical Vapor Deposition (CVD) growth process and may include post-growth treatment. Type IIa