



ELECTRONIC COPY

LABORATORY GROWN DIAMOND REPORT

August 24, 2022	
IGI Report Number	LG544253475
Description	LABORATORY GROWN DIAMOND
Shape and Cutting Style	CUT CORNERED RECTANGULAR MODIFIED BRILLIANT
Measurements	6.96 X 4.94 X 3.38 MM

GRADING RESULTS

Carat Weight	1.01 CARAT
Color Grade	H
Clarity Grade	VVS 2

ADDITIONAL GRADING INFORMATION

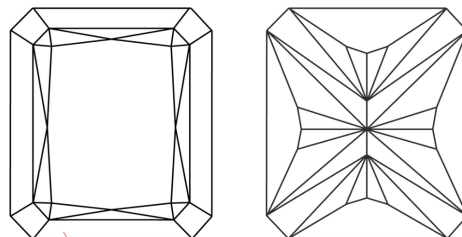
Polish	EXCELLENT
Symmetry	EXCELLENT
Fluorescence	NONE

Inscription(s) **LABGROWN IGI LG544253475**
 Comments: This Laboratory Grown Diamond was created by Chemical Vapor Deposition (CVD) growth process and may include post-growth treatment. Type IIa

Diagram illustrating the proportions of a diamond-shaped object (likely a gemstone) with the following dimensions:

- Top width: 70%
- Left side width: 14%
- Bottom width: 50%
- Right side width: 68.4%
- Top edge: Slightly Thick
- Bottom edge: Pointed

CLARITY CHARACTERISTICS

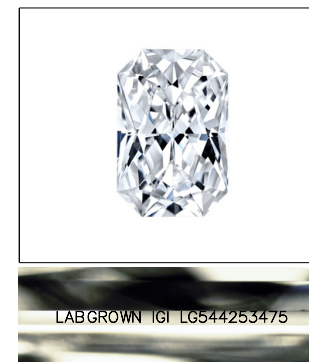


KEY TO SYMBOLS

Red symbols indicate internal characteristics.
Green symbols indicate external characteristics.

GRADING SCALES

COLOR GRADING SCALE	CL		NC		FT		VLT		LT	
	COLORLESS D-F		NEAR COLORLESS G-J		FAINT K-M		VERY LIGHT N-R		LIGHT S-Z	
CLARITY (10x) GRADING SCALE	FL	IF	VVS		VS		SI		I	
	FLAWLESS INTERNALLY FLAWLESS		VERY VERY SLIGHTLY INCLUDED		VERY SLIGHTLY INCLUDED		SLIGHTLY INCLUDED		INCLUDED	

LASERSCRIBESM

Sample Image Used



© IGI 2020, International Gemological Institute

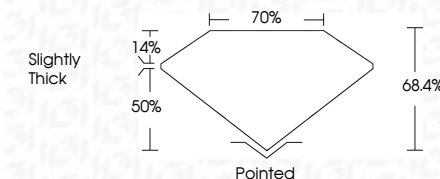
FD - 10 20

www.igi.org

LABORATORY GROWN DIAMOND REPORT

August 24, 2022	
IGI Report Number	LG544253475
Description	LABORATORY GROWN DIAMOND
Shape and Cutting Style	CUT CORNERED RECTANGULAR MODIFIED BRILLIANT
Measurements	6.96 X 4.94 X 3.38 MM

Carat Weight	1.01 CARAT
Color Grade	H
Clarity Grade	VVS 2



ADDITIONAL GRADING INFORMATION

Polish	EXCELLENT
Symmetry	EXCELLENT
Fluorescence	NONE
Inscription(s)	LABGROWN IGI LG544253475

Inscription(s) LABGROWN IGI LG544253475

Comments: This Laboratory Grown Diamond was created by Chemical Vapor Deposition (CVD) growth process and may include post-growth treatment.
Type IIa



August 24, 2022	Lab Report No. LSG42630475	Color Grade	1.01 CARAT
CLIP CORNERED RECT. MODIFIED	556 X 434 X 3.58 MM	Clarity Grade	VVS 2
		Depth	66.4%
		Table	70%
		Girdle	slightly thick
		Culet	Pointed
		Polish	EXCELLENT
		Symmetry	EXCELLENT
		Fluorescence	NONE
		Inscriptions(s)	LABGROWN 1ST
		Comments:	LSG42630475

This Laboratory Grown Diamond was created by Chemical Vapor Deposition (CVD) growth process and may include post-growth treatment.

Type Ia