



**ELECTRONIC COPY**

## LABORATORY GROWN DIAMOND REPORT

November 14, 2022	
IGI Report Number	LG555274155
Description	LABORATORY GROWN DIAMOND
Shape and Cutting Style	ROUND BRILLIANT
Measurements	7.86 - 7.88 X 4.68 MM

## GRADING RESULTS

Carat Weight	1.81 CARAT
Color Grade	D
Clarity Grade	VVS 2
Cut Grade	EXCELLENT

### ADDITIONAL GRADING INFORMATION

Polish	EXCELLENT
Symmetry	EXCELLENT
Fluorescence	NONE

Inscription(s) LABGROWN 16 LG555274155

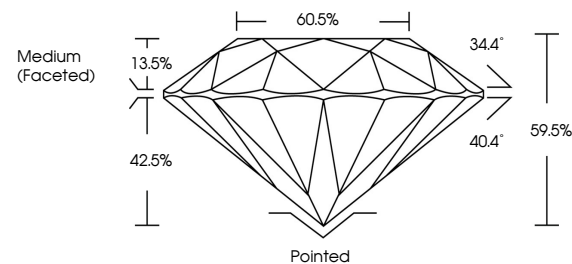
Comments: As Grown - No indication of post-growth treatment.  
This Laboratory Grown Diamond was created by High Pressure High Temperature (HPHT) growth process.  
Type II

## LABORATORY GROWN DIAMOND REPORT

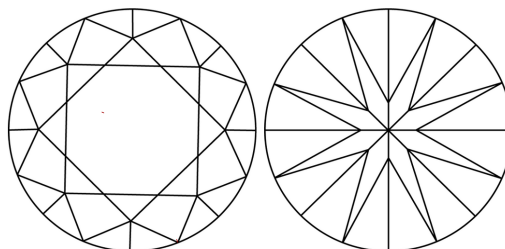
LG555274155

Report verification at [igi.org](http://igi.org)

## PROPORTIONS



## CLARITY CHARACTERISTICS



## KEY TO SYMBOLS

Red symbols indicate internal characteristics.  
Green symbols indicate external characteristics.

LABORATORY GROWN  
DIAMOND REPORT

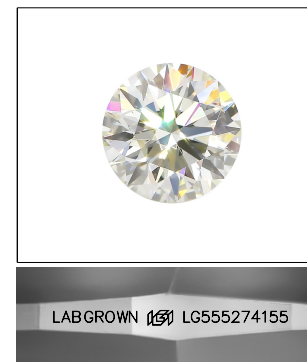
## GRADING SCALES

## CLARITY

IF	VVS <sup>1-2</sup>	VS <sup>1-2</sup>	SI <sup>1-2</sup>	I <sup>1-3</sup>
Internally Flawless	Very Very Slightly Included	Very Slightly Included	Slightly Included	Included

**COLOR**

D E F G H I J Faint Very Light Light

LASERSCRIBE<sup>SM</sup>

Sample Image Used



© IGI 2020, International Gemological Institute

FD - 10 20

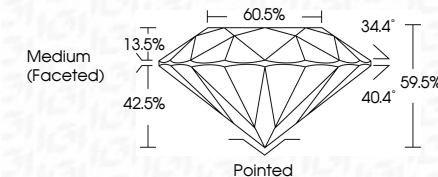
**www.igi.org**

LABORATORY GROWN DIAMOND REPORT

November 14, 2022	
IGI Report Number	LG555274155
Description	LABORATORY GROWN DIAMOND
Shape and Cutting Style	ROUND BRILLIANT
Measurements	7.86 - 7.88 X 4.68 MM

## GRADING RESULTS

Carat Weight	1.81 CARAT
Color Grade	D
Clarity Grade	VVS 2
Cut Grade	EXCELLENT



### ADDITIONAL GRADING INFORMATION

Polish	EXCELLENT
Symmetry	EXCELLENT
Fluorescence	NONE
Inscription(s)	LABGROWN (157) LG555274155

Comments: As Grown - No indication of post-growth treatment.  
This Laboratory Grown Diamond was created by High Pressure High Temperature (HPHT) growth process.  
Type II



November 14, 2022  
IGI Report No LG55274155  
ROUND BRILLIANT

7.86 - 7.88 X 4.68 MM	1.81 CARAT	VVS2	EXCELLENT	59.5%	60.5%	Medium (Excellent)
Carat Weight						
Color Grade						
Clarity Grade						
Cut Grade						
Depth						
Table						
Girdle						

	Pointed	EXCELLENT	EXCELLENT	NONE
Culet				
Polish				
Symmetry				
Fluorescence				
Inscription(s)				

Comments:  
is Grown - No Indication of post-growth  
treatment.  
treated by High Pressure High  
temperature (HPHT) growth process.

THIS DOCUMENT WAS PRODUCED WITH THE FOLLOWING SECURITY MEASURES: SPECIAL DOCUMENT PAPER, INK SCREENS, WATERMARK BACKGROUND DESIGN, HOLOGRAM, AND OTHER SECURITY FEATURES NOT LISTED, AND DO EXCEED DOCUMENT SECURITY INDUSTRY GUIDELINES