



**ELECTRONIC COPY**

LG566336547

Report verification at [igi.org](http://igi.org)

**LABORATORY GROWN DIAMOND REPORT**

February 22, 2023  
IGI Report Number **LG566336547**

Description **LABORATORY GROWN  
DIAMOND**

Shape and Cutting Style **EMERALD CUT**

Measurements **10.57 X 7.60 X 5.16 MM**

**GRADING RESULTS**

Carat Weight **4.07 CARATS**

Color Grade **H**

Clarity Grade **VS 1**

**ADDITIONAL GRADING INFORMATION**

Polish **EXCELLENT**

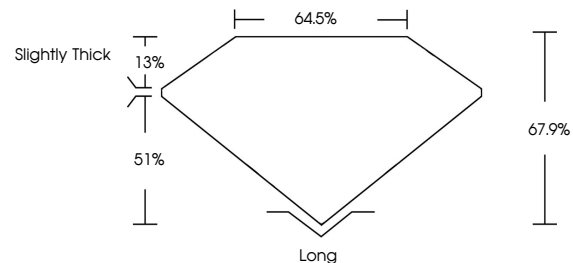
Symmetry **EXCELLENT**

Fluorescence **NONE**

Inscription(s) **IGI LG566336547**

Comments: This Laboratory Grown Diamond was created by Chemical Vapor Deposition (CVD) growth process and may include post-growth treatment. Type IIa

**PROPORTIONS**



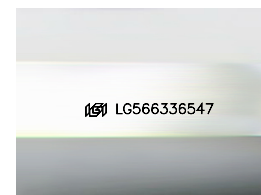
**GRADING SCALES**

**CLARITY**

| IF                  | VVS <sup>1-2</sup>          | VS <sup>1-2</sup>      | SI <sup>1-2</sup> | I <sup>1-3</sup> |
|---------------------|-----------------------------|------------------------|-------------------|------------------|
| Internally Flawless | Very Very Slightly Included | Very Slightly Included | Slightly Included | Included         |

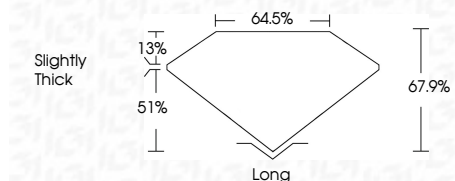
**COLOR**

| D | E | F | G | H | I | J | Faint | Very Light | Light |
|---|---|---|---|---|---|---|-------|------------|-------|
|---|---|---|---|---|---|---|-------|------------|-------|



Sample Image Used

February 22, 2023  
IGI Report Number **LG566336547**  
Description **LABORATORY GROWN  
DIAMOND**  
Shape and Cutting Style **EMERALD CUT**  
Measurements **10.57 X 7.60 X 5.16 MM**  
**GRADING RESULTS**  
Carat Weight **4.07 CARATS**  
Color Grade **H**  
Clarity Grade **VS 1**



**ADDITIONAL GRADING INFORMATION**

Polish **EXCELLENT**

Symmetry **EXCELLENT**

Fluorescence **NONE**

Inscription(s) **IGI LG566336547**

Comments: This Laboratory Grown Diamond was created by Chemical Vapor Deposition (CVD) growth process and may include post-growth treatment. Type IIa



**IGI**



February 22, 2023  
IGI Report No LG566336547  
**EMERALD CUT**

**4.07 CARATS**  
Carat Weight  
Color Grade **H**  
Clarity Grade **VS 1**  
Depth **67.9%**  
Table **64.5%**  
Girdle **Slightly Thick**

**Long**  
Cutlet **EXCELLENT**  
Polish **EXCELLENT**  
Symmetry **EXCELLENT**  
Fluorescence **NONE**  
Inscription(s) **IGI LG566336547**

Comments: This Laboratory Grown Diamond was created by Chemical Vapor Deposition (CVD) growth process and may include post-growth treatment. Type IIa