

ELECTRONIC COPY

LABORATORY GROWN DIAMOND REPORT

April 7, 2023	
IGI Report Number	LG576341570
Description	LABORATORY GROWN DIAMOND
Shape and Cutting Style	CUT CORNERED RECTANGULAR MODIFIED BRILLIANT
Measurements	10.71 X 7.63 X 5.14 MM

GRADING RESULTS

Carat Weight	3.55 CARATS
Color Grade	E
Clarity Grade	VS 1

ADDITIONAL GRADING INFORMATION

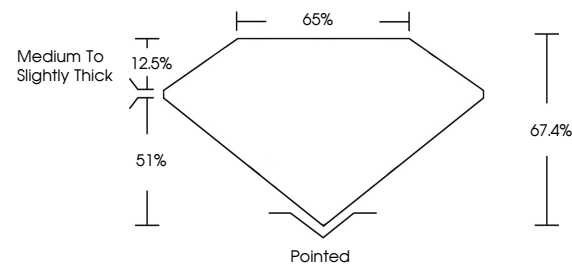
Polish	EXCELLENT
Symmetry	EXCELLENT
Fluorescence	NONE
Inscription(s)	 LG576341570

Comments: This Laboratory Grown Diamond was created by Chemical Vapor Deposition (CVD) growth process and may include post-growth treatment.
Type IIa

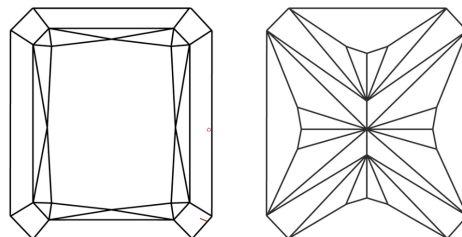
LABORATORY GROWN DIAMOND REPORT

LG576341570
Report verification at igi.org

PROPORTIONS



CLARITY CHARACTERISTICS



KEY TO SYMBOLS

Red symbols indicate internal characteristics.
Green symbols indicate external characteristics.

LABORATORY GROWN
DIAMOND REPORT

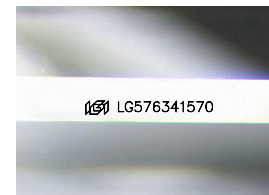
GRADING SCALES

CLARITY

IF	VVS ¹⁻²	VS ¹⁻²	SI ¹⁻²	I ¹⁻³
Internally Flawless	Very Very Slightly Included	Very Slightly Included	Slightly Included	Included

COLOR

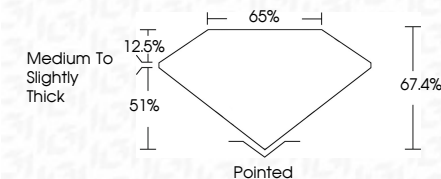
D E F G H I J Faint Very Light Light



Sample Image Used

LABORATORY GROWN DIAMOND REPORT

April 7, 2023	
IGI Report Number	LG576341570
Description	LABORATORY GROWN DIAMOND
Shape and Cutting Style	CUT CORNERED RECTANGULAR MODIFIED BRILLIANT
Measurements	10.71 X 7.63 X 5.14 MM
GRADING RESULTS	
Carat Weight	3.55 CARATS
Color Grade	E
Clarity Grade	VS 1



ADDITIONAL GRADING INFORMATION

Polish	EXCELLENT
Symmetry	EXCELLENT
Fluorescence	NONE
Inscription(s)	153 LG576341570
<p>Comments: This Laboratory Grown Diamond was created by Chemical Vapor Deposition (CVD) growth process and may include post-growth treatment.</p> <p>Type IIa</p>	



© IGI 2020, International Gemological Institute

FD - 10 20

www.igi.org

THIS DOCUMENT WAS PRODUCED WITH THE FOLLOWING SECURITY MEASURES: SPECIAL DOCUMENT PAPER, INK SCREENS, WATERMARK, BACKGROUND DESIGNS, HOLOGRAM AND OTHER SECURITY FEATURES NOT LISTED AND DO EXCEED DOCUMENT SECURITY INDUSTRY GUIDELINES

April 7, 2023	GI Report No. LG57/6341570	GI CORNERED RECT. MODIFIED BRILLIANT
10.71 x 7.63 x 5.14 MM	3.55 CARATS	
Carat Weight		
Color Grade	Vs 1	
Clarity Grade	67.4%	
Depth	66%	
Table		
Grain	Medium to Slightly Thick	
Grain Grade		
Culet	Pointed	
Patch	EXCELLENT	
Fluorescence	EXCELLENT	
Inscriptions(s)	NONE	
	681.LG57/6341570	

Comments: This is a very Green Diamond was treated by Chemical Vapor Deposition (CVD) growth process and may include post-growth treatment.

Type IIa