



# INTERNATIONAL GEMOLOGICAL INSTITUTE

ELECTRONIC COPY

## LABORATORY GROWN DIAMOND REPORT

LG566394070

### LABORATORY GROWN DIAMOND REPORT

#### IGI LABORATORY GROWN DIAMOND IDENTIFICATION REPORT

January 20, 2023  
IGI Report Number LG566394070  
Description LABORATORY GROWN DIAMOND  
Shape and Cutting Style SQUARE CUSHION BRILLIANT  
Measurements 4.99 X 4.95 X 3.47 MM

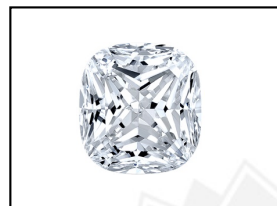
#### GRADING RESULTS

Carat Weight 0.70 CARAT  
Color Grade G  
Clarity Grade VS 1

#### ADDITIONAL GRADING INFORMATION

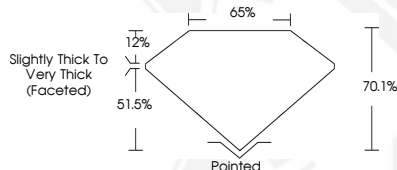
Polish EXCELLENT  
Symmetry EXCELLENT  
Fluorescence NONE  
Inscription(s) LABGROWN (LGI) LG566394070

Comments: This Laboratory Grown Diamond was created by Chemical Vapor Deposition (CVD) growth process and may include post-growth treatment.  
Type IIa



LABGROWN (LGI) LG566394070

LASERSCRIBE<sup>SM</sup>  
Sample Images Used



#### IGI LABORATORY GROWN DIAMOND ID REPORT

January 20, 2023  
IGI Report Number LG566394070  
SQUARE CUSHION BRILLIANT  
4.99 X 4.95 X 3.47 MM  
Carat Weight 0.70 CARAT  
Color Grade G  
Clarity Grade VS 1  
Polish EXCELLENT  
Symmetry EXCELLENT  
Fluorescence NONE  
Inscription(s) LABGROWN (LGI) LG566394070

Comments: This Laboratory Grown Diamond was created by Chemical Vapor Deposition (CVD) growth process and may include post-growth treatment. Type IIa

#### IGI LABORATORY GROWN DIAMOND ID REPORT

January 20, 2023  
IGI Report Number LG566394070  
SQUARE CUSHION BRILLIANT  
4.99 X 4.95 X 3.47 MM  
Carat Weight 0.70 CARAT  
Color Grade G  
Clarity Grade VS 1  
Polish EXCELLENT  
Symmetry EXCELLENT  
Fluorescence NONE  
Inscription(s) LABGROWN (LGI) LG566394070

Comments: This Laboratory Grown Diamond was created by Chemical Vapor Deposition (CVD) growth process and may include post-growth treatment. Type IIa



THIS DOCUMENT WAS PRODUCED WITH THE FOLLOWING SECURITY MEASURES: SPECIAL DOCUMENT PAPER, INK SCREENS, WATERMARK, BACKGROUND DESIGN, HOLOGRAM AND OTHER SECURITY FEATURES NOT LISTED AND DO EXCEED DOCUMENT SECURITY INDUSTRY GUIDELINES.

For terms & conditions and to verify this report, please visit [www.igi.org](http://www.igi.org)