



**INTERNATIONAL  
GEMOLOGICAL  
INSTITUTE**

**ELECTRONIC COPY**

**LABORATORY GROWN  
DIAMOND REPORT**

**LG563222360**

**IGI LABORATORY GROWN  
DIAMOND ID REPORT**

January 18, 2023  
IGI Report Number **LG563222360**  
**ROUND BRILLIANT**  
**4.85 - 4.87 X 2.85 MM**  
Carat Weight 0.41 CARAT  
Color Grade D  
Clarity Grade VVS 2  
Cut Grade EXCELLENT  
Polish VERY GOOD  
Symmetry VERY GOOD  
Fluorescence NONE  
Inscription(s) **LABGROWN (LGI) LG563222360**

Comments: As Grown - No indication of post-growth treatment. This Laboratory Grown Diamond was created by High Pressure High Temperature (HPHT) growth process. Type II

**LABORATORY GROWN DIAMOND REPORT**

**IGI LABORATORY GROWN DIAMOND IDENTIFICATION REPORT**

January 18, 2023  
IGI Report Number **LG563222360**  
Description **LABORATORY GROWN DIAMOND**  
Shape and Cutting Style **ROUND BRILLIANT**  
Measurements **4.85 - 4.87 X 2.85 MM**

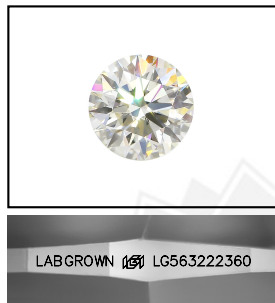
**GRADING RESULTS**

Carat Weight 0.41 CARAT  
Color Grade D  
Clarity Grade VVS 2  
Cut Grade EXCELLENT

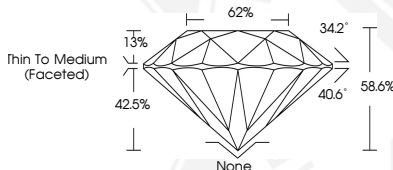
**ADDITIONAL GRADING INFORMATION**

Polish VERY GOOD  
Symmetry VERY GOOD  
Fluorescence NONE  
Inscription(s) **LABGROWN (LGI) LG563222360**

Comments: As Grown - No indication of post-growth treatment. This Laboratory Grown Diamond was created by High Pressure High Temperature (HPHT) growth process. Type II



**LASERSCRIBE<sup>SM</sup>**  
Sample Images Used



**IGI LABORATORY GROWN  
DIAMOND ID REPORT**

January 18, 2023  
IGI Report Number **LG563222360**  
**ROUND BRILLIANT**  
**4.85 - 4.87 X 2.85 MM**  
Carat Weight 0.41 CARAT  
Color Grade D  
Clarity Grade VVS 2  
Cut Grade EXCELLENT  
Polish VERY GOOD  
Symmetry VERY GOOD  
Fluorescence NONE  
Inscription(s) **LABGROWN (LGI) LG563222360**

Comments: As Grown - No indication of post-growth treatment. This Laboratory Grown Diamond was created by High Pressure High Temperature (HPHT) growth process. Type II

THIS DOCUMENT WAS PRODUCED WITH THE FOLLOWING SECURITY MEASURES: SPECIAL DOCUMENT PAPER, INK SCREENS, WATERMARK, BACKGROUND DESIGN, HOLOGRAM AND OTHER SECURITY FEATURES NOT LISTED AND DO EXCEED DOCUMENT SECURITY INDUSTRY GUIDELINES.

For terms & conditions and to verify this report, please visit [www.igi.org](http://www.igi.org)