



# INTERNATIONAL GEMOLOGICAL INSTITUTE

ELECTRONIC COPY

## LABORATORY GROWN DIAMOND REPORT

LG563222358

### LABORATORY GROWN DIAMOND REPORT

#### IGI LABORATORY GROWN DIAMOND IDENTIFICATION REPORT

January 18, 2023  
IGI Report Number LG563222358  
Description LABORATORY GROWN DIAMOND  
Shape and Cutting Style ROUND BRILLIANT  
Measurements 4.71 - 4.75 X 2.96 MM

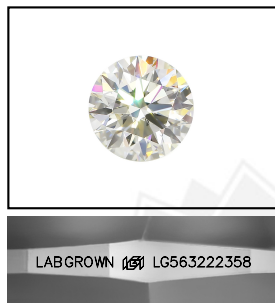
#### GRADING RESULTS

Carat Weight 0.41 CARAT  
Color Grade D  
Clarity Grade VVS 1  
Cut Grade VERY GOOD

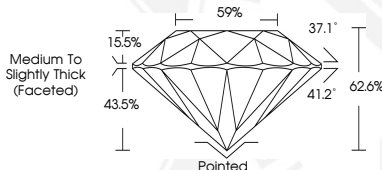
#### ADDITIONAL GRADING INFORMATION

Polish VERY GOOD  
Symmetry VERY GOOD  
Fluorescence NONE  
Inscription(s) LABGROWN (IGI) LG563222358

Comments: As Grown - No indication of post-growth treatment.  
This Laboratory Grown Diamond was created by High Pressure High Temperature (HPHT) growth process.  
Type II



LASERSCRIBE<sup>SM</sup>  
Sample Images Used



#### IGI LABORATORY GROWN DIAMOND ID REPORT

January 18, 2023  
IGI Report Number LG563222358  
ROUND BRILLIANT  
4.71 - 4.75 X 2.96 MM  
Carat Weight 0.41 CARAT  
Color Grade D  
Clarity Grade VVS 1  
Cut Grade VERY GOOD  
Polish VERY GOOD  
Symmetry VERY GOOD  
Fluorescence NONE  
Inscription(s) LABGROWN (IGI) LG563222358

Comments: As Grown - No indication of post-growth treatment. This Laboratory Grown Diamond was created by High Pressure High Temperature (HPHT) growth process. Type II

#### IGI LABORATORY GROWN DIAMOND ID REPORT

January 18, 2023  
IGI Report Number LG563222358  
ROUND BRILLIANT  
4.71 - 4.75 X 2.96 MM  
Carat Weight 0.41 CARAT  
Color Grade D  
Clarity Grade VVS 1  
Cut Grade VERY GOOD  
Polish VERY GOOD  
Symmetry VERY GOOD  
Fluorescence NONE  
Inscription(s) LABGROWN (IGI) LG563222358

Comments: As Grown - No indication of post-growth treatment. This Laboratory Grown Diamond was created by High Pressure High Temperature (HPHT) growth process. Type II



THIS DOCUMENT WAS PRODUCED WITH THE FOLLOWING SECURITY MEASURES: SPECIAL DOCUMENT PAPER, INK SCREENS, WATERMARK, BACKGROUND DESIGN, HOLOGRAM AND OTHER SECURITY FEATURES NOT LISTED AND DO EXCEED DOCUMENT SECURITY INDUSTRY GUIDELINES.

For terms & conditions and to verify this report, please visit [www.igi.org](http://www.igi.org)