



# INTERNATIONAL GEMOLOGICAL INSTITUTE

ELECTRONIC COPY

## LABORATORY GROWN DIAMOND REPORT

LG560208270

### LABORATORY GROWN DIAMOND REPORT

#### IGI LABORATORY GROWN DIAMOND IDENTIFICATION REPORT

January 10, 2023  
IGI Report Number LG560208270  
Description LABORATORY GROWN DIAMOND  
Shape and Cutting Style ROUND BRILLIANT  
Measurements 4.81 - 4.84 X 3.00 MM

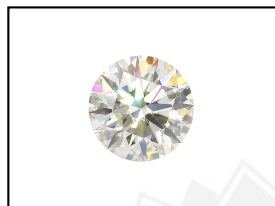
#### GRADING RESULTS

Carat Weight 0.42 CARAT  
Color Grade E  
Clarity Grade VVS 2  
Cut Grade IDEAL

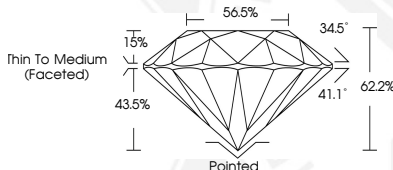
#### ADDITIONAL GRADING INFORMATION

Polish EXCELLENT  
Symmetry EXCELLENT  
Fluorescence NONE  
Inscription(s) LABGROWN IGI LG560208270

Comments: This Laboratory Grown Diamond was created by Chemical Vapor Deposition (CVD) growth process and may include post-growth treatment.  
Type IIa



LASERSCRIBE<sup>SM</sup>  
Sample Images Used



#### IGI LABORATORY GROWN DIAMOND ID REPORT

January 10, 2023  
IGI Report Number LG560208270  
**ROUND BRILLIANT**  
**4.81 - 4.84 X 3.00 MM**  
Carat Weight 0.42 CARAT  
Color Grade E  
Clarity Grade VVS 2  
Cut Grade IDEAL  
Polish EXCELLENT  
Symmetry EXCELLENT  
Fluorescence NONE  
Inscription(s) LABGROWN IGI LG560208270

Comments: This Laboratory Grown Diamond was created by Chemical Vapor Deposition (CVD) growth process and may include post-growth treatment.  
Type IIa

#### IGI LABORATORY GROWN DIAMOND ID REPORT

January 10, 2023  
IGI Report Number LG560208270  
**ROUND BRILLIANT**  
**4.81 - 4.84 X 3.00 MM**  
Carat Weight 0.42 CARAT  
Color Grade E  
Clarity Grade VVS 2  
Cut Grade IDEAL  
Polish EXCELLENT  
Symmetry EXCELLENT  
Fluorescence NONE  
Inscription(s) LABGROWN IGI LG560208270

Comments: This Laboratory Grown Diamond was created by Chemical Vapor Deposition (CVD) growth process and may include post-growth treatment.  
Type IIa



THIS DOCUMENT WAS PRODUCED WITH THE FOLLOWING SECURITY MEASURES: SPECIAL DOCUMENT PAPER, INK SCREENS, WATERMARK, BACKGROUND DESIGN, HOLOGRAM AND OTHER SECURITY FEATURES NOT LISTED AND DO EXCEED DOCUMENT SECURITY INDUSTRY GUIDELINES.

For terms & conditions and to verify this report, please visit [www.igi.org](http://www.igi.org)