



**INTERNATIONAL  
GEMOLOGICAL  
INSTITUTE**

**ELECTRONIC COPY**

**LABORATORY GROWN  
DIAMOND REPORT**

**LG563222840**

**IGI LABORATORY GROWN  
DIAMOND ID REPORT**

January 24, 2023  
IGI Report Number **LG563222840**  
**CUT CORNERED RECTANGULAR  
MODIFIED BRILLIANT**  
**6.43 X 4.64 X 3.15 MM**  
Carat Weight 0.79 CARAT  
Color Grade F  
Clarity Grade VVS 2  
Polish VERY GOOD  
Symmetry EXCELLENT  
Fluorescence NONE  
Inscription(s) LABGROWN (IGI)  
LG563222840

Comments: This Laboratory Grown Diamond was created by Chemical Vapor Deposition (CVD) growth process and may include post-growth treatment.Type Iia

**LABORATORY GROWN DIAMOND REPORT**

**IGI LABORATORY GROWN DIAMOND IDENTIFICATION REPORT**

January 24, 2023  
IGI Report Number LG563222840  
Description LABORATORY GROWN DIAMOND  
Shape and Cutting Style CUT CORNERED RECTANGULAR MODIFIED BRILLIANT  
Measurements 6.43 X 4.64 X 3.15 MM

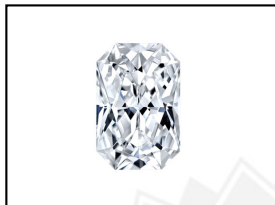
**GRADING RESULTS**

Carat Weight 0.79 CARAT  
Color Grade F  
Clarity Grade VVS 2

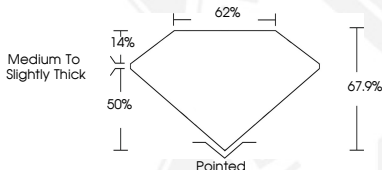
**ADDITIONAL GRADING INFORMATION**

Polish VERY GOOD  
Symmetry EXCELLENT  
Fluorescence NONE  
Inscription(s) LABGROWN (IGI) LG563222840

Comments: This Laboratory Grown Diamond was created by Chemical Vapor Deposition (CVD) growth process and may include post-growth treatment.  
Type Iia



**LASERSCRIBE SM**  
Sample Images Used



THIS DOCUMENT WAS PRODUCED WITH THE FOLLOWING SECURITY MEASURES: SPECIAL DOCUMENT PAPER, INK SCREENS, WATERMARK, BACKGROUND DESIGN, HOLOGRAM AND OTHER SECURITY FEATURES NOT LISTED AND DO EXCEED DOCUMENT SECURITY INDUSTRY GUIDELINES.

For terms & conditions and to verify this report, please visit [www.igi.org](http://www.igi.org)

**IGI LABORATORY GROWN  
DIAMOND ID REPORT**

January 24, 2023  
IGI Report Number **LG563222840**  
**CUT CORNERED RECTANGULAR  
MODIFIED BRILLIANT**  
**6.43 X 4.64 X 3.15 MM**  
Carat Weight 0.79 CARAT  
Color Grade F  
Clarity Grade VVS 2  
Polish VERY GOOD  
Symmetry EXCELLENT  
Fluorescence NONE  
Inscription(s) LABGROWN (IGI)  
LG563222840

Comments: This Laboratory Grown Diamond was created by Chemical Vapor Deposition (CVD) growth process and may include post-growth treatment.Type Iia