



**ELECTRONIC COPY**

LG550263761

Report verification at [igi.org](http://igi.org)

**LABORATORY GROWN DIAMOND REPORT**

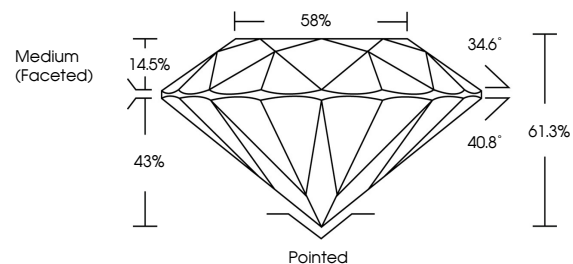
December 19, 2022  
 IGI Report Number **LG550263761**  
 Description **LABORATORY GROWN  
DIAMOND**  
 Shape and Cutting Style **ROUND BRILLIANT**  
 Measurements **9.44 - 9.48 X 5.79 MM**  
**GRADING RESULTS**  
 Carat Weight **3.20 CARATS**  
 Color Grade **G**  
 Clarity Grade **VS 2**  
 Cut Grade **IDEAL**

**ADDITIONAL GRADING INFORMATION**

Polish **EXCELLENT**  
 Symmetry **EXCELLENT**  
 Fluorescence **NONE**  
 Inscription(s) **LABGROWN (L) LG550263761**

Comments: HEARTS & ARROWS  
 This Laboratory Grown Diamond was created by  
 Chemical Vapor Deposition (CVD) growth process and  
 may include post-growth treatment.  
 Type IIa

**PROPORTIONS**



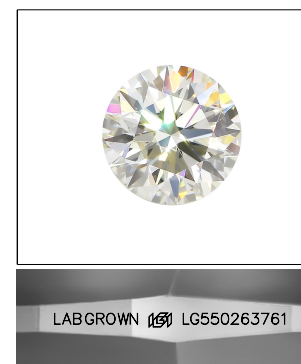
**GRADING SCALES**

**CLARITY**

IF	VVS <sup>1-2</sup>	VS <sup>1-2</sup>	SI <sup>1-2</sup>	I <sup>1-3</sup>
Internally Flawless	Very Very Slightly Included	Very Slightly Included	Slightly Included	Included

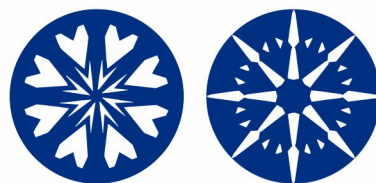
**COLOR**

D	E	F	G	H	I	J	Faint	Very Light	Light
---	---	---	---	---	---	---	-------	------------	-------



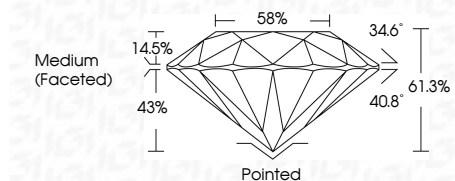
**LASERSCRIBE<sup>SM</sup>**

Sample Image Used



[www.igi.org](http://www.igi.org)

December 19, 2022  
 IGI Report Number **LG550263761**  
 Description **LABORATORY GROWN  
DIAMOND**  
 Shape and Cutting Style **ROUND BRILLIANT**  
 Measurements **9.44 - 9.48 X 5.79 MM**  
**GRADING RESULTS**  
 Carat Weight **3.20 CARATS**  
 Color Grade **G**  
 Clarity Grade **VS 2**  
 Cut Grade **IDEAL**



**ADDITIONAL GRADING INFORMATION**

Polish **EXCELLENT**  
 Symmetry **EXCELLENT**  
 Fluorescence **NONE**  
 Inscription(s) **LABGROWN (L) LG550263761**

Comments: HEARTS & ARROWS  
 This Laboratory Grown Diamond was created by  
 Chemical Vapor Deposition (CVD) growth process and  
 may include post-growth treatment.  
 Type IIa



December 19, 2022  
 IGI Report No LG550263761  
**ROUND BRILLIANT**  
 9.44 - 9.48 X 5.79 MM  
 Carat Weight **3.20 CARATS**  
 Color Grade **G**  
 Clarity Grade **VS 2**  
 Cut Grade **IDEAL**  
 Depth **61.3%**  
 Table **58%**  
 Girdle **Medium (Faceted)**  
 Culet **Pointed**  
 Polish **EXCELLENT**  
 Symmetry **EXCELLENT**  
 Fluorescence **NONE**  
 Inscription(s) **LABGROWN (L) LG550263761**

Comments:  
**HEARTS & ARROWS**  
 This Laboratory Grown Diamond was  
 created by Chemical Vapor Deposition  
 (CVD) growth process and may include  
 post-growth treatment.  
 Type IIa