



ELECTRONIC COPY

LABORATORY GROWN DIAMOND REPORT

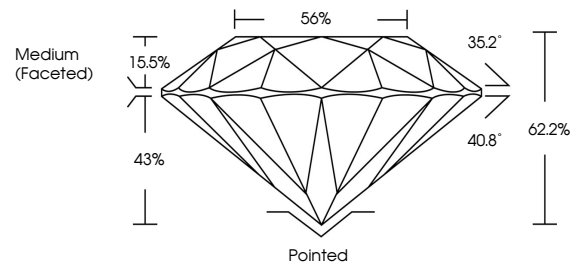
November 2, 2022
 IGI Report Number **LG550261807**
 Description **LABORATORY GROWN
DIAMOND**
 Shape and Cutting Style **ROUND BRILLIANT**
 Measurements **11.22 - 11.26 X 6.99 MM**
GRADING RESULTS
 Carat Weight **5.42 CARATS**
 Color Grade **G**
 Clarity Grade **VS 2**
 Cut Grade **IDEAL**

ADDITIONAL GRADING INFORMATION

Polish **EXCELLENT**
 Symmetry **EXCELLENT**
 Fluorescence **NONE**
 Inscription(s) **LABGROWN IGI LG550261807**

Comments: HEARTS & ARROWS
 This Laboratory Grown Diamond was created by
 Chemical Vapor Deposition (CVD) growth process and
 may include post-growth treatment.
 Type IIa

PROPORTIONS



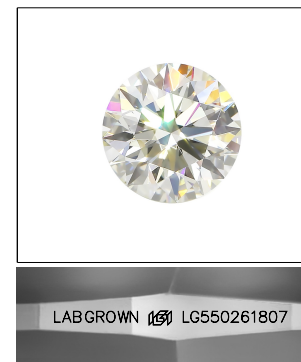
GRADING SCALES

CLARITY

IF	VVS ¹⁻²	VS ¹⁻²	SI ¹⁻²	I ¹⁻³
Internally Flawless	Very Very Slightly Included	Very Slightly Included	Slightly Included	Included

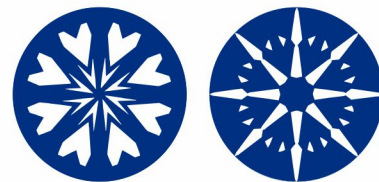
COLOR

D	E	F	G	H	I	J	Faint	Very Light	Light
---	---	---	---	---	---	---	-------	------------	-------

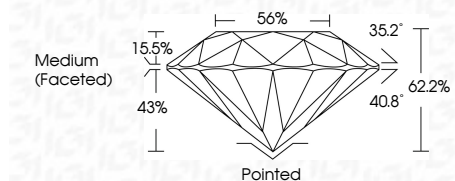


LASERSCRIBESM

Sample Image Used



November 2, 2022
 IGI Report Number **LG550261807**
 Description **LABORATORY GROWN
DIAMOND**
 Shape and Cutting Style **ROUND BRILLIANT**
 Measurements **11.22 - 11.26 X 6.99 MM**
GRADING RESULTS
 Carat Weight **5.42 CARATS**
 Color Grade **G**
 Clarity Grade **VS 2**
 Cut Grade **IDEAL**



ADDITIONAL GRADING INFORMATION

Polish **EXCELLENT**
 Symmetry **EXCELLENT**
 Fluorescence **NONE**
 Inscription(s) **LABGROWN IGI LG550261807**

Comments: HEARTS & ARROWS
 This Laboratory Grown Diamond was created by
 Chemical Vapor Deposition (CVD) growth process and
 may include post-growth treatment.
 Type IIa



November 2, 2022	IGI Report No LG550261807	ROUND BRILLIANT
11.22 - 11.26 X 6.99 MM	5.42 CARATS	G
Color Grade	VS 2	IDEAL
Clarity Grade	62.2%	56%
Cut Grade	Medium (Faceted)	Pointed
Table	EXCELLENT	EXCELLENT
Depth	EXCELLENT	NONE
Grade	LABGROWN IGI	LG550261807
Culet	None	
Polish	None	
Symmetry	None	
Fluorescence	None	
Inscriptions	None	

Comments: HEARTS & ARROWS
 This Laboratory Grown Diamond was created by Chemical Vapor Deposition (CVD) growth process and may include post-growth treatment.
 Type IIa