



**ELECTRONIC COPY**

**LABORATORY GROWN DIAMOND REPORT**

LG546289973

**LABORATORY GROWN  
DIAMOND REPORT**

LABORATORY GROWN DIAMOND REPORT

September 28, 2022  
IGI Report Number **LG546289973**

Description **LABORATORY GROWN  
DIAMOND**  
Shape and Cutting Style **ROUND BRILLIANT**  
Measurements **8.82 - 8.86 X 5.40 MM**

**GRADING RESULTS**

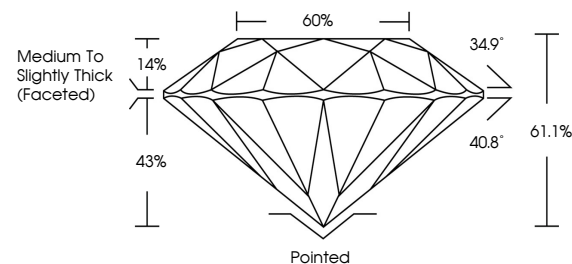
Carat Weight **2.63 CARATS**  
Color Grade **G**  
Clarity Grade **VVS 2**  
Cut Grade **EXCELLENT**

**ADDITIONAL GRADING INFORMATION**

Polish **EXCELLENT**  
Symmetry **EXCELLENT**  
Fluorescence **NONE**  
Inscription(s) **LABGROWN IGI LG546289973**

Comments: HEARTS & ARROWS  
This Laboratory Grown Diamond was created by  
Chemical Vapor Deposition (CVD) growth process and  
may include post-growth treatment.  
Type IIa

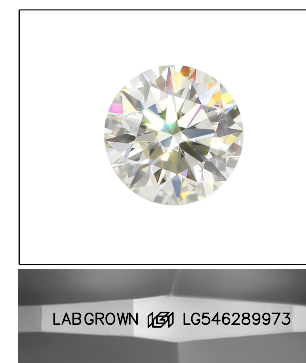
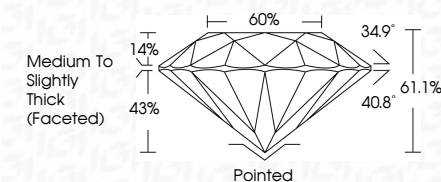
**PROPORTIONS**



**GRADING SCALES**

|                                   |                                    |                                   |                              |                      |              |   |
|-----------------------------------|------------------------------------|-----------------------------------|------------------------------|----------------------|--------------|---|
| COLOR<br>GRADING<br>SCALE         | CL                                 | NC                                | FT                           | VLT                  | LT           |   |
|                                   | COLORLESS<br>D-F                   | NEAR<br>COLORLESS<br>G-J          | FAINT<br>K-M                 | VERY LIGHT<br>N-R    | LIGHT<br>S-Z |   |
| CLARITY (10x)<br>GRADING<br>SCALE | FL                                 | IF                                | VVS                          | VS                   | SI           | I |
|                                   | FLAWLESS<br>INTERNALLY<br>FLAWLESS | VERY VERY<br>SLIGHTLY<br>INCLUDED | VERY<br>SLIGHTLY<br>INCLUDED | SLIGHTLY<br>INCLUDED | INCLUDED     |   |

September 28, 2022  
IGI Report Number **LG546289973**  
Description **LABORATORY GROWN  
DIAMOND**  
Shape and Cutting Style **ROUND BRILLIANT**  
Measurements **8.82 - 8.86 X 5.40 MM**  
**GRADING RESULTS**  
Carat Weight **2.63 CARATS**  
Color Grade **G**  
Clarity Grade **VVS 2**  
Cut Grade **EXCELLENT**



**LASERSCRIBE<sup>SM</sup>**

Sample Image Used

**ADDITIONAL GRADING INFORMATION**

Polish **EXCELLENT**  
Symmetry **EXCELLENT**  
Fluorescence **NONE**  
Inscription(s) **LABGROWN IGI LG546289973**

Comments: HEARTS & ARROWS  
This Laboratory Grown Diamond was created by  
Chemical Vapor Deposition (CVD) growth process and  
may include post-growth treatment.  
Type IIa



www.igi.org



**IGI**

September 28, 2022  
IGI Report No LG546289973  
**ROUND BRILLIANT**  
**8.82 - 8.86 X 5.40 MM**  
Carat Weight **2.63 CARATS**  
Color Grade **G**  
Clarity Grade **VVS 2**  
Cut Grade **EXCELLENT**  
Depth **61.1%**  
Table **60%**  
Girdle **Medium To Slightly Thick (Faceted)**  
Culet **Pointed**  
Polish **EXCELLENT**  
Symmetry **EXCELLENT**  
Fluorescence **NONE**  
Inscription(s) **LABGROWN IGI LG546289973**  
Comments: **HEARTS & ARROWS**  
This Laboratory Grown Diamond was created by Chemical Vapor Deposition (CVD) growth process and may include post-growth treatment.  
Type IIa