



ELECTRONIC COPY

LG550263474

Report verification at igi.org

LABORATORY GROWN DIAMOND REPORT

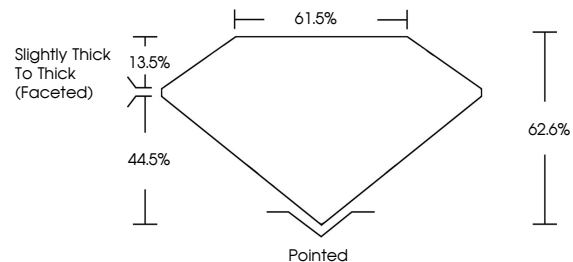
December 16, 2022
 IGI Report Number **LG550263474**
 Description **LABORATORY GROWN
DIAMOND**
 Shape and Cutting Style **PEAR BRILLIANT**
 Measurements **10.88 X 7.08 X 4.43 MM**
GRADING RESULTS
 Carat Weight **2.01 CARATS**
 Color Grade **F**
 Clarity Grade **VS 1**
 Cut Grade **VERY GOOD**

ADDITIONAL GRADING INFORMATION

Polish **VERY GOOD**
 Symmetry **EXCELLENT**
 Fluorescence **NONE**
 Inscription(s) **LABGROWN (L) LG550263474**

Comments: This Laboratory Grown Diamond was created by Chemical Vapor Deposition (CVD) growth process and may include post-growth treatment. Type IIa

PROPORTIONS



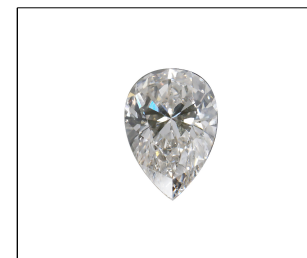
GRADING SCALES

CLARITY

IF	VVS ¹⁻²	VS ¹⁻²	SI ¹⁻²	I ¹⁻³
Internally Flawless	Very Very Slightly Included	Very Slightly Included	Slightly Included	Included

COLOR

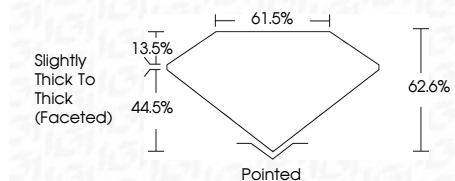
D	E	F	G	H	I	J	Faint	Very Light	Light
---	---	---	---	---	---	---	-------	------------	-------



LASERSCRIBESM

Sample Image Used

December 16, 2022
 IGI Report Number **LG550263474**
 Description **LABORATORY GROWN
DIAMOND**
 Shape and Cutting Style **PEAR BRILLIANT**
 Measurements **10.88 X 7.08 X 4.43 MM**
GRADING RESULTS
 Carat Weight **2.01 CARATS**
 Color Grade **F**
 Clarity Grade **VS 1**
 Cut Grade **VERY GOOD**



ADDITIONAL GRADING INFORMATION

Polish **VERY GOOD**
 Symmetry **EXCELLENT**
 Fluorescence **NONE**
 Inscription(s) **LABGROWN (L) LG550263474**

Comments: This Laboratory Grown Diamond was created by Chemical Vapor Deposition (CVD) growth process and may include post-growth treatment. Type IIa



IGI

December 16, 2022
 IGI Report No LG550263474
PEAR BRILLIANT
 10.88 X 7.08 X 4.43 MM
 Carat Weight **2.01 CARATS**
 Color Grade **F**
 Clarity Grade **VS 1**
 Cut Grade **VERY GOOD**
 Depth **62.6%**
 Table **61.5%**
 Girdle **Slightly Thick To Thick (Faceted)**
 Culet **Pointed**
 Polish **VERY GOOD**
 Symmetry **EXCELLENT**
 Fluorescence **NONE**
 Inscriptions(s) **LABGROWN (L) LG550263474**

Comments: This Laboratory Grown Diamond was created by Chemical Vapor Deposition (CVD) growth process and may include post-growth treatment. Type IIa

