



INTERNATIONAL GEMOLOGICAL INSTITUTE

ELECTRONIC COPY

LABORATORY GROWN DIAMOND REPORT

LG480175546

IGI LABORATORY GROWN DIAMOND ID REPORT

06/28/2021

IGI Report Number **LG480175546**

PEAR BRILLIANT

7.15 X 4.34 X 2.73 MM

Carat Weight	0.51 CARAT
Color Grade	E
Clarity Grade	VVS 2
Polish	EXCELLENT
Symmetry	EXCELLENT
Fluorescence	NONE
Inscription(s)	LABGROWN IGI LG480175546

Comments: As Grown - No indication of post-growth treatment.
This Laboratory Grown Diamond was created by High Pressure High Temperature (HPHT) growth process.
Type II

LABORATORY GROWN DIAMOND REPORT

IGI LABORATORY GROWN DIAMOND IDENTIFICATION REPORT

06/28/2021

IGI Report Number **LG480175546**

Shape and Cutting Style **PEAR BRILLIANT**

Measurements **7.15 X 4.34 X 2.73 MM**

GRADING RESULTS

Carat Weight **0.51 CARAT**

Color Grade **E**

Clarity Grade **VVS 2**

ADDITIONAL GRADING INFORMATION

Polish **EXCELLENT**

Symmetry **EXCELLENT**

Fluorescence **NONE**

Inscription(s) **LABGROWN IGI LG480175546**

Comments: As Grown - No indication of post-growth treatment.

This Laboratory Grown Diamond was created by High Pressure High Temperature (HPHT) growth process.

Type II

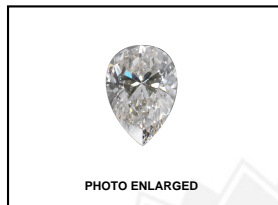


PHOTO ENLARGED



LABGROWN IGI LG480175546

LASERSCRIBESM



IGI LABORATORY GROWN DIAMOND ID REPORT

06/28/2021

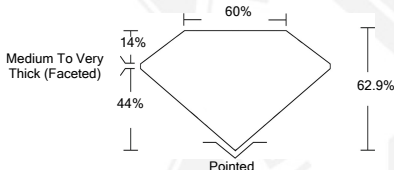
IGI Report Number **LG480175546**

PEAR BRILLIANT

7.15 X 4.34 X 2.73 MM

Carat Weight	0.51 CARAT
Color Grade	E
Clarity Grade	VVS 2
Polish	EXCELLENT
Symmetry	EXCELLENT
Fluorescence	NONE
Inscription(s)	LABGROWN IGI LG480175546

Comments: As Grown - No indication of post-growth treatment.
This Laboratory Grown Diamond was created by High Pressure High Temperature (HPHT) growth process.
Type II



This Laboratory Grown Diamond (LGD) described in this Report has been analyzed, graded and Laserscribed[®] by International Gemological Institute (IGI). A LGD has essentially the chemical, physical and optical properties as a mined diamond, with the exception of being man-made (a manufactured product). LGD's are typically produced by CVD (chemical vapor deposition) or by HPHT (high pressure high temperature) growth processes and may include post growth modifications to change the color. IGI utilizes the most advanced techniques and equipment currently available including, binocular microscopes, diamond color masters, non-contact-optical measuring device, a wide range analytical techniques including FTIR, UV-VIS-NIR, raman spectroscopy, and fluorescence analysis at various excitation wavelengths. This Report includes advanced security features. This Report is neither a guarantee, valuation nor appraisal and by making the report IGI does not agree to purchase or replace the article.

INTERNATIONAL GEMOLOGICAL INSTITUTE, INC

THIS DOCUMENT WAS PRODUCED WITH THE FOLLOWING SECURITY MEASURES: SPECIAL DOCUMENT PAPER, INK SCREENS, WATERMARK BACKGROUND DESIGN, HOLOGRAM AND OTHER SECURITY FEATURES NOT LISTED AND DO EXCEED DOCUMENT SECURITY INDUSTRY GUIDELINES.

For Terms & Conditions and to verify this report, please visit www.igi.org