



**ELECTRONIC COPY**

## LABORATORY GROWN DIAMOND REPORT

September 1, 2022

IGI Report Number **LG542205310**

Description	LABORATORY GROWN DIAMOND
-------------	-----------------------------

Shape and Cutting Style **OVAL BRILLIANT**

Measurements 9.54 X 6.71 X 4.15 MM

## GRADING RESULTS

Carat Weight 1.64 CARAT

Color Grade G

Clarity Grade VS 1

### ADDITIONAL GRADING INFORMATION

Polish **EXCELLENT**

Symmetry **EXCELLENT**

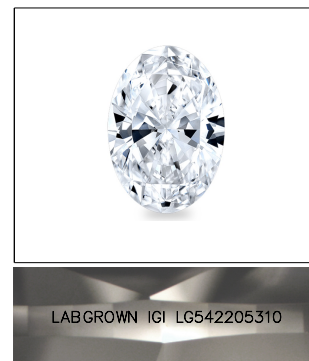
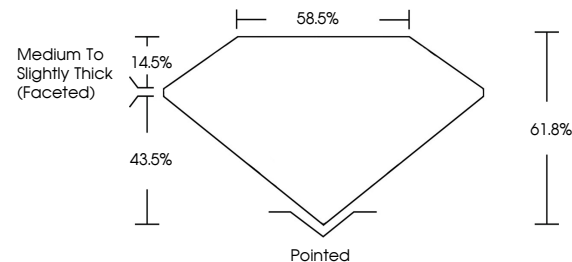
Fluorescence **NONE**

Inscription(s) LABGROWN IGI LG542205310

Comments: This Laboratory Grown Diamond was created by Chemical Vapor Deposition (CVD) growth process and may include post-growth treatment.  
Type IIa

LG542205310

## PROPORTIONS

LASERSCRIBE<sup>SM</sup>

Sample Image Used



© IGI 2020, International Gemological Institute

FD - 10 20

**www.igi.org**

LABORATORY GROWN  
DIAMOND REPORT

## GRADING SCALES

COLOR GRADING SCALE	CL		NC		FT		VLT		LT	
	COLORLESS D-F		NEAR COLORLESS G-J		FAINT K-M		VERY LIGHT N-R		LIGHT S-Z	
CLARITY (10x) GRADING SCALE	FL IF		VVS		VS		SI		I	
	FLAWLESS INTERNALLY FLAWLESS		VERY VERY SLIGHTLY INCLUDED		SLIGHTLY INCLUDED		SLIGHTLY INCLUDED		INCLUDE	

LABORATORY GROWN DIAMOND REPORT

September 1, 2022

IGI Report Number **LG542205310**

Description **LABORATORY GROWN**

Shape and Cutting Style **OVAL BRILLIANT**

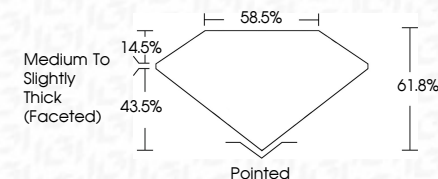
Measurements 9.54 X 6.71 X 4.15 MM

## GRADING RESULTS

Carat Weight **1.64 CARAT**

Color Grade **G**

Clarity Grade VS 1



### ADDITIONAL GRADING INFORMATION

Polish **EXCELLENT**Symmetry **EXCELLENT**Fluorescence **NONE**

Inscription(s) **LABGROWN IGI LG542205310**

Comments: This Laboratory Grown Diamond was created by Chemical Vapor Deposition (CVD) growth process and may include post-growth treatment.  
Type IIa



September 1, 2022	Report No. LGS42205310
GIA Report No. LGS42205310	
1.64 CARAT	1.64 MM
Color Grade	Clarity Grade
G	VS1
	61.8%
	58.8%
	Medium to slightly thick (faced)
	Pointed
	EXCELLENT
	EXCELLENT
	NONE
	LARGO VAIN LGS42205310
Comments:	
	This Laboratory Grown Diamond was created by Chemical Vapor Deposition (CVD) growth process and may include trace-growth inclusions.
	Type IIC