



ELECTRONIC COPY

LABORATORY GROWN DIAMOND REPORT

December 15, 2022	
IGI Report Number	LG560216795
Description	LABORATORY GROWN DIAMOND
Shape and Cutting Style	HEART BRILLIANT
Measurements	6.87 X 8.13 X 4.75 MM

GRADING RESULTS

Carat Weight	1.53 CARAT
Color Grade	F
Clarity Grade	VS 1

ADDITIONAL GRADING INFORMATION

Polish	EXCELLENT
Symmetry	EXCELLENT
Fluorescence	NONE

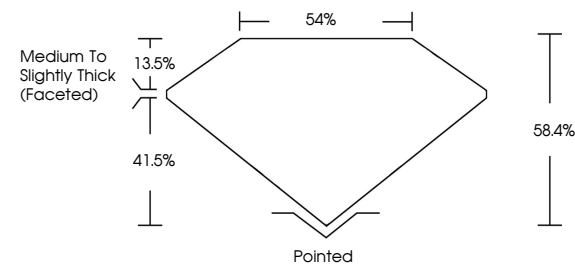
Inscription(s) **LABGROWN  LG560216795**
 Comments: This Laboratory Grown Diamond was created by Chemical Vapor Deposition (CVD) growth process and may include post-growth treatment.
 Type IIa

LABORATORY GROWN DIAMOND REPORT

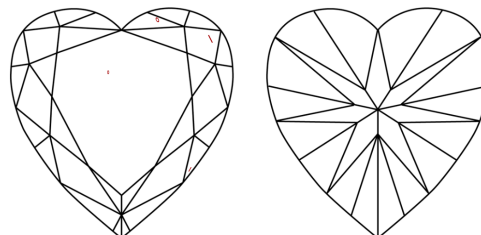
LG560216795

Report verification at igi.org

PROPORTIONS



CLARITY CHARACTERISTICS



KEY TO SYMBOLS

Red symbols indicate internal characteristics.
Green symbols indicate external characteristics.

LABORATORY GROWN
DIAMOND REPORT

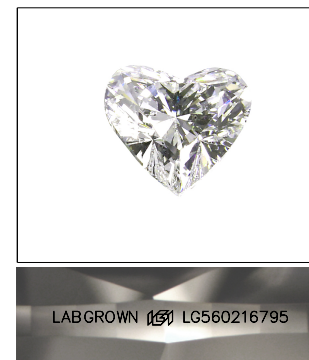
GRADING SCALES

CLARITY

IF	VVS ¹⁻²	VS ¹⁻²	SI ¹⁻²	I ¹⁻³
Internally Flawless	Very Very Slightly Included	Very Slightly Included	Slightly Included	Included

COLOR

D E F G H I J Faint Very Light Light

LASERSCRIBESM

Sample Image Used



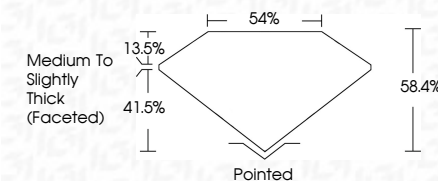
© IGI 2020, International Gemological Institute

FD - 10 20

www.igi.org

LABORATORY GROWN DIAMOND REPORT

December 15, 2022	
IGI Report Number	LG560216795
Description	LABORATORY GROWN DIAMOND
Shape and Cutting Style	HEART BRILLIANT
Measurements	6.87 X 8.13 X 4.75 MM
GRADING RESULTS	
Carat Weight	1.53 CARAT
Color Grade	F
Clarity Grade	VS 1



ADDITIONAL GRADING INFORMATION

Polish	EXCELLENT
Symmetry	EXCELLENT
Fluorescence	NONE
Inscription(s)	LABGROWN (157) LG560216795

Comments: This Laboratory Grown Diamond was created by Chemical Vapor Deposition (CVD) growth process and may include post-growth treatment.
Type IIa



December 15, 2022
IGI Report No LG560216795
HEART BRILLIANT

6.67 X 8.13 X 4.75 MM	1.53 CARAT	VS 1	Pointed
Carat Weight		88.4%	EXCELLENT
Color Grade		54%	EXCELLENT
Clarity Grade		Medium To Slightly Thick (Faceted)	NONE
Depth			LABGROWN (g)
Table			
Girdle			
Culet			
Polish			
Symmetry			
Fluorescence			
Inscription(s)			

Comments:
This Laboratory Grown Diamond was created by Chemical Vapor Deposition (CVD) growth process and may include post-growth treatment.

THIS DOCUMENT WAS PRODUCED WITH THE FOLLOWING SECURITY MEASURES: SPECIAL DOCUMENT PAPER, INK SCREENS, WATERMARK, BACKGROUND DESIGNS, HOLOGRAM AND OTHER SECURITY FEATURES NOT LISTED AND DO EXCEED DOCUMENT SECURITY INDUSTRY GUIDELINE