



ELECTRONIC COPY

LABORATORY GROWN DIAMOND REPORT

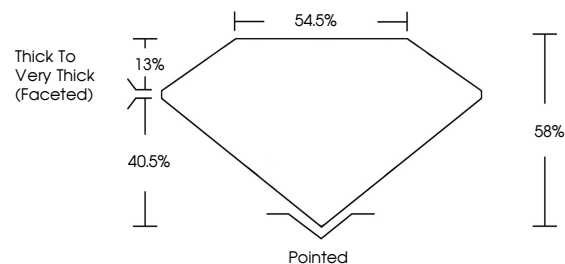
November 1, 2022
 IGI Report Number **LG549211290**
 Description **LABORATORY GROWN
DIAMOND**
 Shape and Cutting Style **HEART BRILLIANT**
 Measurements **8.98 X 10.20 X 5.92 MM**
GRADING RESULTS
 Carat Weight **3.11 CARATS**
 Color Grade **H**
 Clarity Grade **VS 1**
 Cut Grade **VERY GOOD**

ADDITIONAL GRADING INFORMATION

Polish **EXCELLENT**
 Symmetry **VERY GOOD**
 Fluorescence **NONE**
 Inscription(s) **LABGROWN IGI LG549211290**

Comments: This Laboratory Grown Diamond was created by Chemical Vapor Deposition (CVD) growth process and may include post-growth treatment. Type IIa

PROPORTIONS



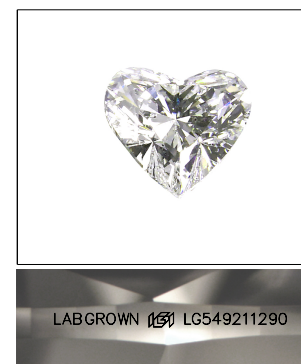
GRADING SCALES

CLARITY

IF	VVS ¹⁻²	VS ¹⁻²	SI ¹⁻²	I ¹⁻³
Internally Flawless	Very Very Slightly Included	Very Slightly Included	Slightly Included	Included

COLOR

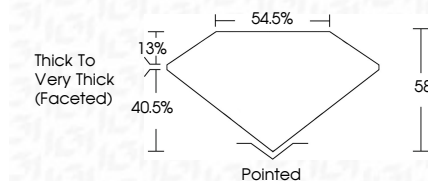
D	E	F	G	H	I	J	Faint	Very Light	Light
---	---	---	---	---	---	---	-------	------------	-------



LASERSCRIBESM

Sample Image Used

November 1, 2022
 IGI Report Number **LG549211290**
 Description **LABORATORY GROWN
DIAMOND**
 Shape and Cutting Style **HEART BRILLIANT**
 Measurements **8.98 X 10.20 X 5.92 MM**
GRADING RESULTS
 Carat Weight **3.11 CARATS**
 Color Grade **H**
 Clarity Grade **VS 1**
 Cut Grade **VERY GOOD**



ADDITIONAL GRADING INFORMATION

Polish **EXCELLENT**
 Symmetry **VERY GOOD**
 Fluorescence **NONE**
 Inscription(s) **LABGROWN IGI LG549211290**

Comments: This Laboratory Grown Diamond was created by Chemical Vapor Deposition (CVD) growth process and may include post-growth treatment. Type IIa



IGI

November 1, 2022
 IGI Report No LG549211290
HEART BRILLIANT
 8.98 X 10.20 X 5.92 MM
 Carat Weight **3.11 CARATS**
 Color Grade **H**
 Clarity Grade **VS 1**
 Cut Grade **VERY GOOD**
 Depth **58%**
 Table **54.5%**
 Girdle **Thick To Very Thick (Faceted)**
 Culet **Pointed**
 Polish **EXCELLENT**
 Symmetry **VERY GOOD**
 Fluorescence **NONE**
 Inscription(s) **LABGROWN IGI LG549211290**

Comments: This Laboratory Grown Diamond was created by Chemical Vapor Deposition (CVD) growth process and may include post-growth treatment. Type IIa