



ELECTRONIC COPY

LABORATORY GROWN DIAMOND REPORT

December 20, 2022
 IGI Report Number **LG559292732**
 Description **LABORATORY GROWN
DIAMOND**
 Shape and Cutting Style **SQUARE CUSHION MODIFIED
BRILLIANT**
 Measurements **9.06 X 8.90 X 5.71 MM**

GRADING RESULTS

Carat Weight **3.46 CARATS**
 Color Grade **H**
 Clarity Grade **VS 1**
 Cut Grade **VERY GOOD**

ADDITIONAL GRADING INFORMATION

Polish **EXCELLENT**
 Symmetry **EXCELLENT**
 Fluorescence **NONE**

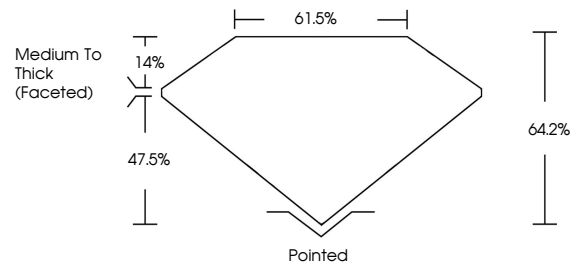
Inscription(s) **LABGROWN (L) LG559292732**

Comments: This Laboratory Grown Diamond was created by Chemical Vapor Deposition (CVD) growth process and may include post-growth treatment. Type IIa

LG559292732

Report verification at igi.org

PROPORTIONS



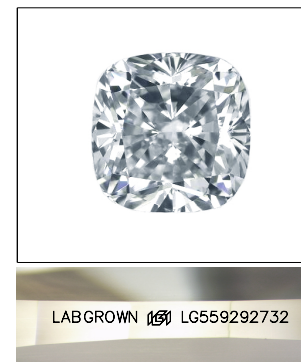
GRADING SCALES

CLARITY

IF	VVS ¹⁻²	VS ¹⁻²	SI ¹⁻²	I ¹⁻³
Internally Flawless	Very Very Slightly Included	Very Slightly Included	Slightly Included	Included

COLOR

D	E	F	G	H	I	J	Faint	Very Light	Light
---	---	---	---	---	---	---	-------	------------	-------



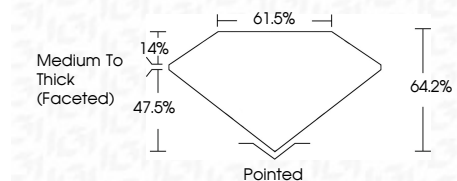
LASERSCRIBESM

Sample Image Used

December 20, 2022
 IGI Report Number **LG559292732**
 Description **LABORATORY GROWN
DIAMOND**
 Shape and Cutting Style **SQUARE CUSHION MODIFIED
BRILLIANT**
 Measurements **9.06 X 8.90 X 5.71 MM**

GRADING RESULTS

Carat Weight **3.46 CARATS**
 Color Grade **H**
 Clarity Grade **VS 1**
 Cut Grade **VERY GOOD**



ADDITIONAL GRADING INFORMATION

Polish **EXCELLENT**
 Symmetry **EXCELLENT**
 Fluorescence **NONE**
 Inscription(s) **LABGROWN (L) LG559292732**

Comments: This Laboratory Grown Diamond was created by Chemical Vapor Deposition (CVD) growth process and may include post-growth treatment. Type IIa



December 20, 2022	IGI Report No LG559292732	SQUARE CUSHION MODIFIED BRILLIANT	9.06 X 8.90 X 5.71 MM	3.46 CARATS	H	VS 1	VERY GOOD	64.2%	61.5%	Medium To Thick (Faceted)	Pointed	EXCELLENT	EXCELLENT	NONE	LABGROWN (L) LG559292732
Carat Weight	Color Grade	Clarity Grade	Cut Grade	Depth	Table	Grade	Culet	Polish	Symmetry	Fluorescence	Inscriptions(s)	Comments: This Laboratory Grown Diamond was created by Chemical Vapor Deposition (CVD) growth process and may include post-growth treatment. Type IIa			