



ELECTRONIC COPY

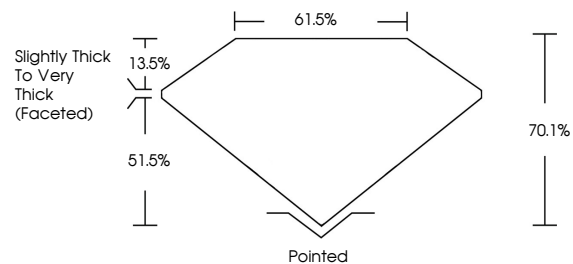
LABORATORY GROWN DIAMOND REPORT

LG528234143

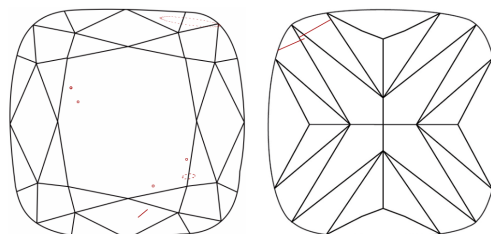
GRADING SCALES

COLOR GRADING SCALE	CL	NC	FT	VL	LT	
	COLORLESS D-F	NEAR COLORLESS G-J	FAINT K-M	VERY LIGHT N-R	LIGHT S-Z	
CLARITY (10x) GRADING SCALE	FL	IF	VVS	VS	SI	I
	FLAWLESS INTERNALLY FLAWLESS	VERY VERY SLIGHTLY INCLUDED	VERY SLIGHTLY INCLUDED	SLIGHTLY INCLUDED	INCLUDED	

PROPORTIONS

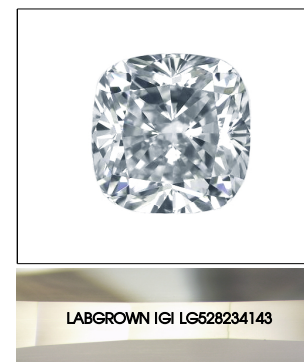


CLARITY CHARACTERISTICS



KEY TO SYMBOLS

Red symbols indicate internal characteristics. Green symbols indicate external characteristics.



LASERSCRIBESM

Sample Image Used

June 14, 2022

IGI Report Number

LG528234143

Description

LABORATORY GROWN DIAMOND

Shape and Cutting Style SQUARE CUSHION MODIFIED BRILLIANT

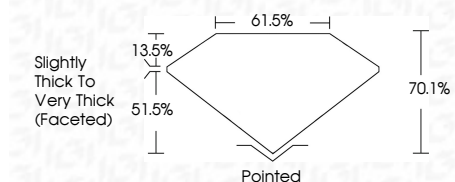
Measurements 5.70 X 5.61 X 3.93 MM

GRADING RESULTS

Carat Weight 1.00 CARAT

Color Grade F

Clarity Grade SI 1



ADDITIONAL GRADING INFORMATION

Polish EXCELLENT

Symmetry EXCELLENT

Fluorescence NONE

Inscription(s) LABGROWN IGI LG528234143

Comments: This Laboratory Grown Diamond was created by Chemical Vapor Deposition (CVD) growth process and may include post-growth treatment. Type IIa

June 14, 2022

IGI Report Number LG528234143

Description LABORATORY GROWN DIAMOND

Shape and Cutting Style SQUARE CUSHION MODIFIED BRILLIANT

Measurements 5.70 X 5.61 X 3.93 MM

GRADING RESULTS

Carat Weight 1.00 CARAT

Color Grade F

Clarity Grade SI 1

ADDITIONAL GRADING INFORMATION

Polish EXCELLENT

Symmetry EXCELLENT

Fluorescence NONE

Inscription(s) LABGROWN IGI LG528234143

Comments: This Laboratory Grown Diamond was created by Chemical Vapor Deposition (CVD) growth process and may include post-growth treatment. Type IIa



IGI

IGI Report No	LG528234143
Shape and Cutting Style	SQUARE CUSHION MODIFIED BRILLIANT
Carat Weight	1.00 CARAT
Color Grade	F
Clarity Grade	SI 1
Depth	70.1%
Table	61.0%
Grade	Slightly Thick To Very Thick (Faceted)
Culet	Pointed
Polish	EXCELLENT
Symmetry	EXCELLENT
Fluorescence	NONE
Inscription(s)	LABGROWN IGI LG528234143
Comments:	This Laboratory Grown Diamond was created by Chemical Vapor Deposition (CVD) growth process and may include post-growth treatment. Type IIa