



IGI GEMOLOGICAL REPORT

IGI LABORATORY GROWN DIAMOND GRADING REPORT

11/12/2020
IGI Report Number LG447069255
Shape and Cutting Style SQUARE EMERALD CUT
Measurements 8.54 X 8.44 X 5.96 MM

GRADING RESULTS

Carat Weight 4.00 CARATS
Color Grade E
Clarity Grade VS 1

ADDITIONAL GRADING INFORMATION

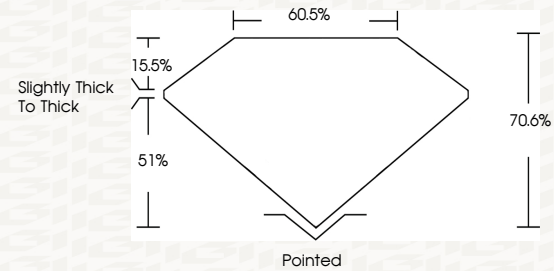
Polish EXCELLENT
Symmetry EXCELLENT
Fluorescence NONE
Inscription(s) LABGROWN IGI LG447069255

Comments: This Chemical Vapor Deposition (CVD) laboratory grown diamond is classified as Type IIa

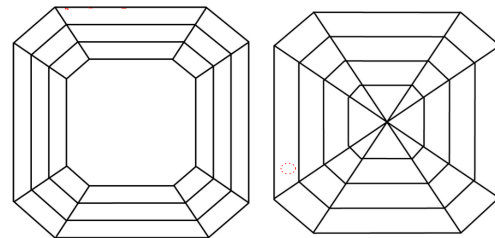


ADDITIONAL INFORMATION

PROPORTIONS



CLARITY CHARACTERISTICS



KEY TO SYMBOLS

Red symbols indicate internal characteristics.
Green symbols indicate external characteristics.

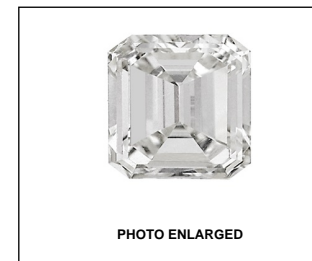
This Report is subject to the terms and conditions

© IGI 2000, edition 2019 all rights reserved.

GRADING SCALES

Table showing color grading scales (CL, NC, FT, VLT, LT) and clarity grading scales (FL, IF, VVS, VS, SI, I).

The laboratory grown diamond described in this Report (Report) has been graded, tested, analyzed, examined and/or inscribed by International Gemological Institute (IGI). A laboratory grown diamond is one that has essentially the same chemical, physical and optical properties as a mined diamond...



LASERSCRIBE SM



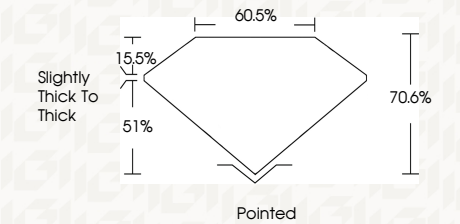
THE DOCUMENT WAS PRODUCED WITH THE FOLLOWING SECURITY MEASURES: SPECIAL DOCUMENT PAPER, INK SCREENS, WATERMARK BACKGROUND, DESIGNS HOLOGRAM AND OTHER SECURITY FEATURES NOT LISTED AND DO EXCEED DOCUMENT SECURITY INDUSTRY GUIDELINES

IGI LABORATORY GROWN DIAMOND GRADING REPORT

11/12/2020
IGI Report Number LG447069255
Shape and Cutting Style SQUARE EMERALD CUT
Measurements 8.54 X 8.44 X 5.96 MM

GRADING RESULTS

Carat Weight 4.00 CARATS
Color Grade E
Clarity Grade VS 1



ADDITIONAL GRADING INFORMATION

Polish EXCELLENT
Symmetry EXCELLENT
Fluorescence NONE
Inscription(s) LABGROWN IGI LG447069255

Comments: This Chemical Vapor Deposition (CVD) laboratory grown diamond is classified as Type IIa



IGI

11/12/2020
IGI Report No LG447069255
SQUARE EMERALD CUT
8.54 X 8.44 X 5.96 MM
Carat Weight 4.00 CARATS
Color Grade E
Clarity Grade VS 1
Depth 70.6%
Table 60.5%
Girdle slightly thick to thick
Culet None
Polish EXCELLENT
Symmetry EXCELLENT
Fluorescence NONE
Inscription(s) LABGROWN IGI LG447069255

Comments: This Chemical Vapor Deposition (CVD) laboratory grown diamond is classified as Type IIa