



LG455011605

LABORATORY GROWN DIAMOND REPORT

01/05/2021
IGI Report Number LG455011605
Shape and Cutting Style ROUND BRILLIANT
Measurements 6.61 - 6.64 x 4.06 mm

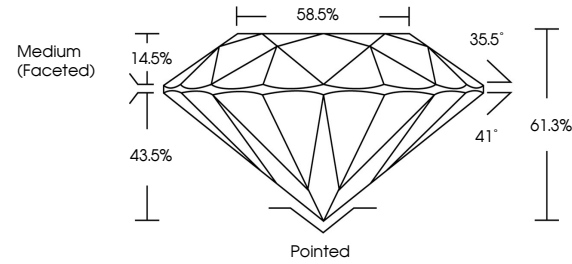
GRADING RESULTS
Carat Weight 1.09 CARAT
Color Grade F
Clarity Grade VVS 2
Cut Grade IDEAL

ADDITIONAL GRADING INFORMATION
Polish EXCELLENT
Symmetry EXCELLENT
Fluorescence NONE
Inscription(s) LABGROWN IGI LG455011605

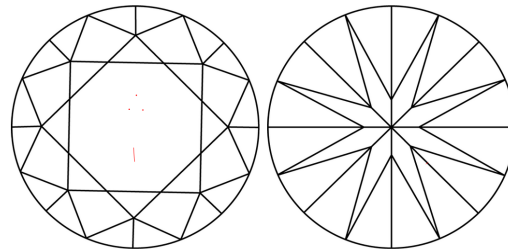
Comments: This Chemical Vapor Deposition (CVD) laboratory grown diamond is classified as Type IIa.



PROPORTIONS



CLARITY CHARACTERISTICS



KEY TO SYMBOLS

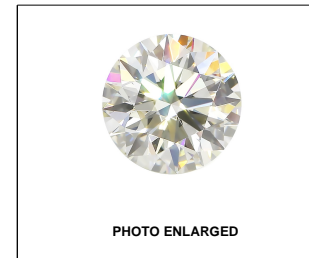
Red symbols indicate internal characteristics.
Green symbols indicate external characteristics.

GRADING SCALES

Table with 5 columns for Color Grading Scale (CL, NC, FT, VLT, LT) and Clarity (10x) Grading Scale (FL, IF, VVS, VS, SI, I) with corresponding descriptions.

The laboratory grown diamond described in this Report (Report) has been graded, tested, analyzed, examined and/or inscribed by International Gemological Institute (IGI). A laboratory grown diamond is one that has essentially the same chemical, physical and optical properties as a mined diamond...

© INTERNATIONAL GEMOLOGICAL INSTITUTE, INC.



LABGROWN IGI LG455011605

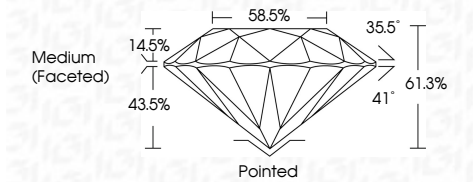
LASERSCRIBE SM



THIS DOCUMENT WAS PRODUCED WITH THE FOLLOWING SECURITY MEASURES: SPECIAL DOCUMENT PAPER, INK SCREENS, WATERMARK BACKGROUND DESIGNS, HOLOGRAM AND OTHER SECURITY FEATURES NOT LISTED AND DO EXCEED DOCUMENT SECURITY INDUSTRY GUIDELINES.

01/05/2021
IGI Report Number LG455011605
Shape and Cutting Style ROUND BRILLIANT
Measurements 6.61 - 6.64 x 4.06 mm

GRADING RESULTS
Carat Weight 1.09 CARAT
Color Grade F
Clarity Grade VVS 2
Cut Grade IDEAL



ADDITIONAL GRADING INFORMATION
Polish EXCELLENT
Symmetry EXCELLENT
Fluorescence NONE
Inscription(s) LABGROWN IGI LG455011605

Comments: This Chemical Vapor Deposition (CVD) laboratory grown diamond is classified as Type IIa.



IGI

01/05/2021
IGI Report No LG455011605
ROUND BRILLIANT
Carat Weight 1.09 CARAT
Color Grade F
Clarity Grade VVS 2
Cut Grade IDEAL
Depth 61.3%
Table 58.5%
Girdle Medium (Faceted)
Culet Pointed
Polish EXCELLENT
Symmetry EXCELLENT
Fluorescence NONE
Inscription(s) LABGROWN IGI LG455011605
Comments: This Chemical Vapor Deposition (CVD) laboratory grown diamond is classified as Type IIa.