



**INTERNATIONAL  
GEMOLOGICAL  
INSTITUTE**

**ELECTRONIC COPY LABORATORY GROWN  
DIAMOND REPORT**

**IGI LABORATORY GROWN  
DIAMOND ID REPORT**

February 8, 2022  
IGI Report Number **LG515230631**

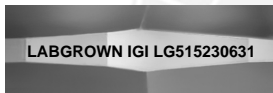
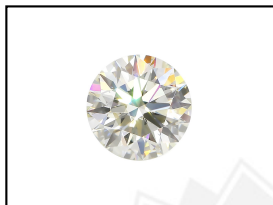
**LABORATORY GROWN DIAMOND REPORT**

**LG515230631**

**ROUND BRILLIANT**  
**4.87 - 4.90 X 3.07 MM**  
Carat Weight 0.44 CARAT  
Color Grade D  
Clarity Grade VVS 2  
Cut Grade EXCELLENT  
Polish EXCELLENT  
Symmetry EXCELLENT  
Fluorescence NONE  
Inscription(s) LABGROWN IGI  
LG515230631

**IGI LABORATORY GROWN DIAMOND IDENTIFICATION REPORT**

February 8, 2022  
IGI Report Number LG515230631  
Description LABORATORY GROWN DIAMOND  
Shape and Cutting Style ROUND BRILLIANT  
Measurements 4.87 - 4.90 X 3.07 MM



Comments: As Grown - No indication of post-growth treatment.  
This Laboratory Grown Diamond was created by High Pressure High Temperature (HPHT) growth process.  
Type II

**GRADING RESULTS**

Carat Weight 0.44 CARAT  
Color Grade D  
Clarity Grade VVS 2  
Cut Grade EXCELLENT

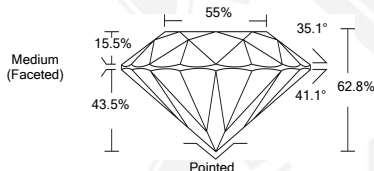
**LASERSCRIBE<sup>SM</sup>**  
Sample Images Used



**ADDITIONAL GRADING INFORMATION**

Polish EXCELLENT  
Symmetry EXCELLENT  
Fluorescence NONE  
Inscription(s) LABGROWN IGI LG515230631

Comments: As Grown - No indication of post-growth treatment.  
This Laboratory Grown Diamond was created by High Pressure High Temperature (HPHT) growth process.  
Type II



**IGI LABORATORY GROWN  
DIAMOND ID REPORT**

February 8, 2022  
IGI Report Number **LG515230631**

**ROUND BRILLIANT**  
**4.87 - 4.90 X 3.07 MM**  
Carat Weight 0.44 CARAT  
Color Grade D  
Clarity Grade VVS 2  
Cut Grade EXCELLENT  
Polish EXCELLENT  
Symmetry EXCELLENT  
Fluorescence NONE  
Inscription(s) LABGROWN IGI  
LG515230631

Comments: As Grown - No indication of post-growth treatment.  
This Laboratory Grown Diamond was created by High Pressure High Temperature (HPHT) growth process.  
Type II

THIS DOCUMENT WAS PRODUCED WITH THE FOLLOWING SECURITY MEASURES: SPECIAL DOCUMENT PAPER, INK SCREENS, WATERMARK, BACKGROUND DESIGN, HOLOGRAM AND OTHER SECURITY FEATURES NOT LISTED AND DO EXCEED DOCUMENT SECURITY INDUSTRY GUIDELINES.

For Terms & Conditions and to verify this report, please visit [www.igi.org](http://www.igi.org)