



ELECTRONIC COPY

LABORATORY GROWN DIAMOND REPORT

August 17, 2022	
IGI Report Number	LG530228770
Description	LABORATORY GROWN DIAMOND
Shape and Cutting Style	ROUND BRILLIANT
Measurements	6.71 - 6.73 X 4.13 MM

GRADING RESULTS

Carat Weight	1.15 CARAT
Color Grade	E
Clarity Grade	VVS 2
Cut Grade	IDEAL

ADDITIONAL GRADING INFORMATION

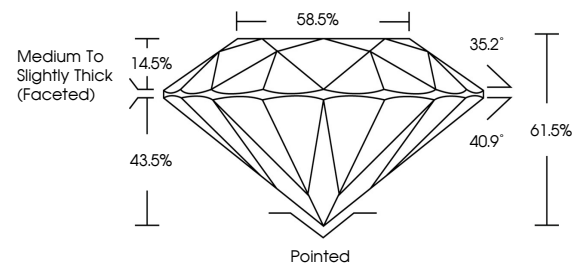
Polish	EXCELLENT
Symmetry	EXCELLENT
Fluorescence	NONE

Inscription(s) LABGROWN | G | LG530228770

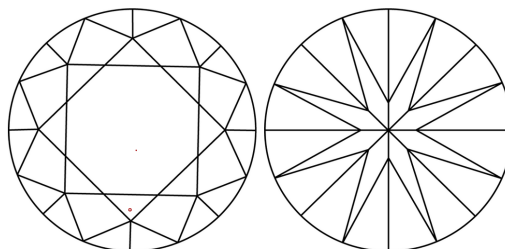
Comments: This Laboratory Grown Diamond was created by Chemical Vapor Deposition (CVD) growth process and may include post-growth treatment.
Type IIa

LG530228770

PROPORTIONS



CLARITY CHARACTERISTICS

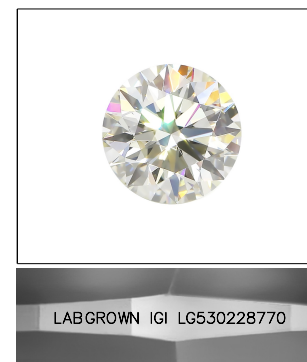


KEY TO SYMBOLS

Red symbols indicate internal characteristics.
Green symbols indicate external characteristics.

GRADING SCALES

COLOR GRADING SCALE	CL		NC		FT		VLT		LT	
	COLORLESS D-F		NEAR COLORLESS G-J		FAINT K-M		VERY LIGHT N-R		LIGHT S-Z	
CLARITY (10x) GRADING SCALE	FL	IF	VVS		VS		SI		I	
	FLAWLESS INTERNALLY FLAWLESS		VERY VERY SLIGHTLY INCLUDED		VERY SLIGHTLY INCLUDED		SLIGHTLY INCLUDED		INCLUDED	

LASERSCRIBESM

Sample Image Used



© IGI 2020, International Gemological Institute

FD - 10 20

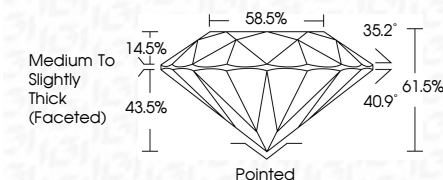
LABORATORY GROWN DIAMOND REPORT

August 17, 2022	
IGI Report Number	LG530228770
Description	LABORATORY GROWN

Shape and Cutting Style	ROUND BRILLIANT
Measurements	6.71 - 6.73 X 4.13 MM

GRADING RESULTS

Carat Weight	1.15 CARAT
Color Grade	E
Clarity Grade	VVS 2
Cut Grade	IDEAL



ADDITIONAL GRADING INFORMATION

Polish	EXCELLENT
Symmetry	EXCELLENT
Fluorescence	NONE
Inscription(s)	LABGROWN IGI LG530228770

Comments: This Laboratory Grown Diamond was created by Chemical Vapor Deposition (CVD) growth process and may include post-growth treatment.
Type IIa



August 17, 2022	Report No. GS02028770	1.15 CARAT	Polished
ROUND BRILLIANT	4.71 - 4.73 X 4.13 MM	VVS 2	EXCELLENT
Color Grade	Clarity Grade	IDEAL	EXCELLENT
	Cut Grade	61.5%	NONE
	Depth	58.9%	LAPSEWORN 1E1
	Table	Medium To Slightly Thick (faced)	1560228770
	Girdle		
	Culet		
	Poleish		
	Symmetry		
	Fluorescence		
	Inscriptions		
	Comments:		
	This Laboratory Grown Diamond was created by Chemical Vapor Deposition (CVD) growth process and may include natural inclusions with treatment.		
	Page 1 of 1		

Comments: This Laboratory Grown Diamond was created by Chemical Vapor Deposition (CVD) growth process and may include post-growth treatment.