



ELECTRONIC COPY

LABORATORY GROWN DIAMOND REPORT

LG542205388

September 1, 2022
IGI Report Number **LG542205388**

Description **LABORATORY GROWN
DIAMOND**
Shape and Cutting Style **ROUND BRILLIANT**
Measurements **10.26 - 10.32 X 6.22 MM**

GRADING RESULTS

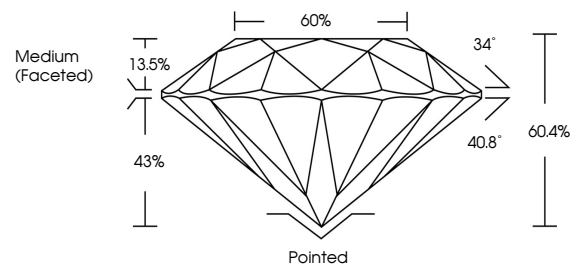
Carat Weight **4.09 CARATS**
Color Grade **G**
Clarity Grade **VS 1**
Cut Grade **EXCELLENT**

ADDITIONAL GRADING INFORMATION

Polish **EXCELLENT**
Symmetry **EXCELLENT**
Fluorescence **NONE**
Inscription(s) **LABGROWN IGI LG542205388**

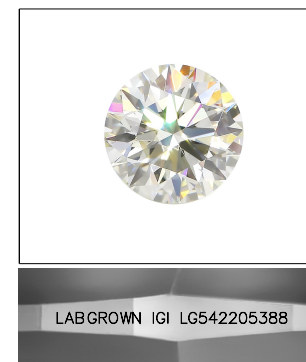
Comments: HEARTS & ARROWS
This Laboratory Grown Diamond was created by
Chemical Vapor Deposition (CVD) growth process and
may include post-growth treatment.
Type IIa

PROPORTIONS



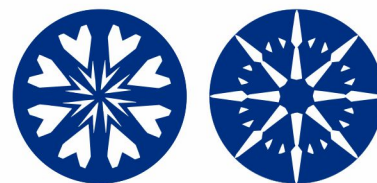
GRADING SCALES

| | | | | | |
|-----------------------------|------------------------------|-----------------------------|------------------------|-------------------|-----------|
| COLOR GRADING SCALE | CL | NC | FT | VL | LT |
| | COLORLESS D-F | NEAR COLORLESS G-J | FAINT K-M | VERY LIGHT N-R | LIGHT S-Z |
| CLARITY (10x) GRADING SCALE | FL | VVS | VS | SI | I |
| | FLAWLESS INTERNALLY FLAWLESS | VERY VERY SLIGHTLY INCLUDED | VERY SLIGHTLY INCLUDED | SLIGHTLY INCLUDED | INCLUDED |



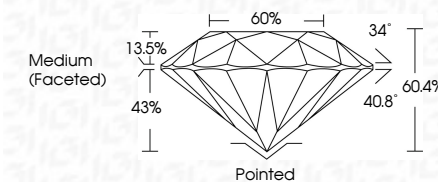
LASERSCRIBESM

Sample Image Used



www.igi.org

September 1, 2022
IGI Report Number **LG542205388**
Description **LABORATORY GROWN
DIAMOND**
Shape and Cutting Style **ROUND BRILLIANT**
Measurements **10.26 - 10.32 X 6.22 MM**
GRADING RESULTS
Carat Weight **4.09 CARATS**
Color Grade **G**
Clarity Grade **VS 1**
Cut Grade **EXCELLENT**



ADDITIONAL GRADING INFORMATION

Polish **EXCELLENT**
Symmetry **EXCELLENT**
Fluorescence **NONE**
Inscription(s) **LABGROWN IGI LG542205388**

Comments: HEARTS & ARROWS
This Laboratory Grown Diamond was created by
Chemical Vapor Deposition (CVD) growth process and
may include post-growth treatment.
Type IIa



| | | | | | | | | | | | | | | | | | | | | | | | | | | | | | |
|-------------------|---------------------------|--------------|-------------|-------------|---|---------------|------|-----------|-----------|-------|-------|----------------|-------|--------------|-------|-------|-----|------------------|---------|--------|-----------|----------|-----------|--------------|------|----------------|--------------------------|-----------|---|
| September 1, 2022 | IGI Report No LG542205388 | Carat Weight | 4.09 CARATS | Color Grade | G | Clarity Grade | VS 1 | Cut Grade | EXCELLENT | Table | 60.4% | Pavilion Angle | 40.8° | Crown Height | 13.5% | Depth | 43% | Medium (Faceted) | Pointed | Polish | EXCELLENT | Symmetry | EXCELLENT | Fluorescence | NONE | Inscription(s) | LABGROWN IGI LG542205388 | Comments: | HEARTS & ARROWS This Laboratory Grown Diamond was created by Chemical Vapor Deposition (CVD) growth process and may include post-growth treatment. Type IIa |
|-------------------|---------------------------|--------------|-------------|-------------|---|---------------|------|-----------|-----------|-------|-------|----------------|-------|--------------|-------|-------|-----|------------------|---------|--------|-----------|----------|-----------|--------------|------|----------------|--------------------------|-----------|---|

