



**ELECTRONIC COPY**

**LABORATORY GROWN DIAMOND REPORT**

LG539244805

August 17, 2022  
IGI Report Number **LG539244805**

Description **LABORATORY GROWN  
DIAMOND**

Shape and Cutting Style **CUSHION MODIFIED BRILLIANT**

Measurements **9.83 X 8.60 X 5.85 MM**

**GRADING RESULTS**

Carat Weight **3.73 CARATS**

Color Grade **G**

Clarity Grade **VS 1**

**ADDITIONAL GRADING INFORMATION**

Polish **EXCELLENT**

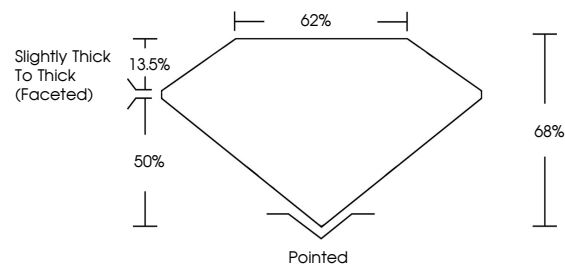
Symmetry **EXCELLENT**

Fluorescence **NONE**

Inscription(s) **LABGROWN IGI LG539244805**

Comments: This Laboratory Grown Diamond was created by Chemical Vapor Deposition (CVD) growth process and may include post-growth treatment. Type IIa

**PROPORTIONS**



**LABORATORY GROWN  
DIAMOND REPORT**

August 17, 2022  
IGI Report Number **LG539244805**

Description **LABORATORY GROWN  
DIAMOND**

Shape and Cutting Style **CUSHION MODIFIED  
BRILLIANT**

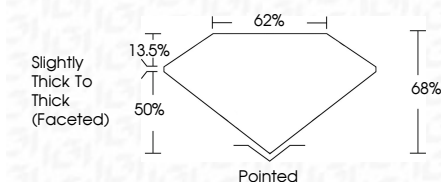
Measurements **9.83 X 8.60 X 5.85 MM**

**GRADING RESULTS**

Carat Weight **3.73 CARATS**

Color Grade **G**

Clarity Grade **VS 1**



**ADDITIONAL GRADING INFORMATION**

Polish **EXCELLENT**

Symmetry **EXCELLENT**

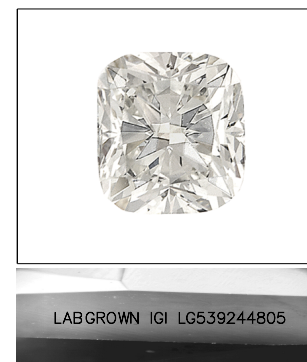
Fluorescence **NONE**

Inscription(s) **LABGROWN IGI LG539244805**

Comments: This Laboratory Grown Diamond was created by Chemical Vapor Deposition (CVD) growth process and may include post-growth treatment. Type IIa

**GRADING SCALES**

COLOR GRADING SCALE	CL	NC	FT	VLT	LT
	COLORLESS D-F	NEAR COLORLESS G-J	FAINT K-M	VERY LIGHT N-R	LIGHT S-Z
CLARITY (10x) GRADING SCALE	FL	VVS	VS	SI	I
	FLAWLESS INTERNALLY FLAWLESS	VERY VERY SLIGHTLY INCLUDED	VERY SLIGHTLY INCLUDED	SLIGHTLY INCLUDED	INCLUDED



**LASERSCRIBE<sup>SM</sup>**

Sample Image Used



**IGI**

August 17, 2022	IGI Report No LG539244805	CUSHION MODIFIED BRILLIANT	9.83 X 8.60 X 5.85 MM	3.73 CARATS	G	VS 1	68%	62%	Slightly Thick To Thick (Faceted)	Pointed	EXCELLENT	EXCELLENT	NONE	LABGROWN IGI LG539244805
Color Grade	Carat Weight	Shape and Cutting Style	Measurements	Carat Weight	Color Grade	Clarity Grade	Table	Depth	Grade	Culet	Polish	Symmetry	Fluorescence	Inscription(s)
Comments:	The Laboratory Grown Diamond was created by Chemical Vapor Deposition (CVD) growth process and may include post-growth treatment. Type IIa													