



ELECTRONIC COPY

LABORATORY GROWN DIAMOND REPORT

LG542205241

September 2, 2022
IGI Report Number **LG542205241**

Description **LABORATORY GROWN
DIAMOND**

Shape and Cutting Style **CUT CORNERED RECTANGULAR
MODIFIED BRILLIANT**

Measurements **8.68 X 6.20 X 4.28 MM**

GRADING RESULTS

Carat Weight **2.03 CARATS**

Color Grade **G**

Clarity Grade **VS 2**

ADDITIONAL GRADING INFORMATION

Polish **EXCELLENT**

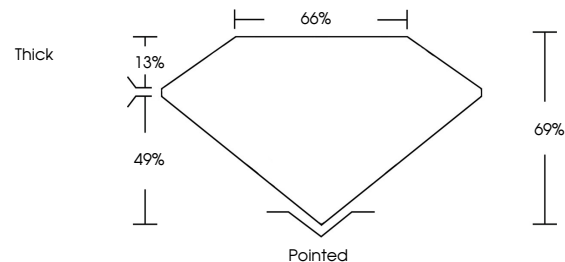
Symmetry **EXCELLENT**

Fluorescence **NONE**

Inscription(s) **LABGROWN IGI LG542205241**

Comments: This Laboratory Grown Diamond was created by Chemical Vapor Deposition (CVD) growth process and may include post-growth treatment. Type IIa

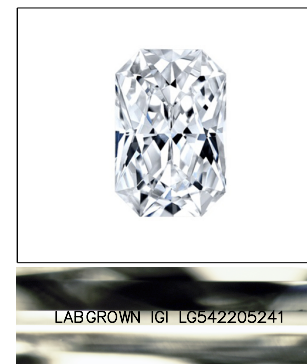
PROPORTIONS



**LABORATORY GROWN
DIAMOND REPORT**

GRADING SCALES

| | | | | | | |
|-----------------------------|------------------------------|-----------------------------|------------------------|-------------------|-----------|----------|
| COLOR GRADING SCALE | CL | NC | FT | VL | LT | |
| | COLORLESS D-F | NEAR COLORLESS G-J | FAINT K-M | VERY LIGHT N-R | LIGHT S-Z | |
| CLARITY (10x) GRADING SCALE | FL | IF | VVS | VS | SI | I |
| | FLAWLESS INTERNALLY FLAWLESS | VERY VERY SLIGHTLY INCLUDED | VERY SLIGHTLY INCLUDED | SLIGHTLY INCLUDED | INCLUDED | INCLUDED |



LASERSCRIBESM

Sample Image Used

LABORATORY GROWN DIAMOND REPORT

September 2, 2022
IGI Report Number **LG542205241**
Description **LABORATORY GROWN
DIAMOND**

Shape and Cutting Style **CUT CORNERED
RECTANGULAR MODIFIED
BRILLIANT**

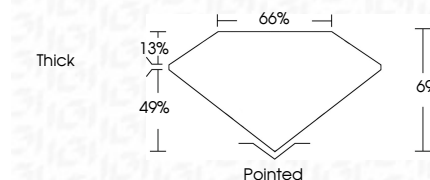
Measurements **8.68 X 6.20 X 4.28 MM**

GRADING RESULTS

Carat Weight **2.03 CARATS**

Color Grade **G**

Clarity Grade **VS 2**



ADDITIONAL GRADING INFORMATION

Polish **EXCELLENT**

Symmetry **EXCELLENT**

Fluorescence **NONE**

Inscription(s) **LABGROWN IGI LG542205241**

Comments: This Laboratory Grown Diamond was created by Chemical Vapor Deposition (CVD) growth process and may include post-growth treatment. Type IIa



IGI



| | | | | | | | | | | | | | | |
|-----------------------------|---------------------------|--------------|-------------|---------------|-------|-------|--------|---------|-----------|-----------|--------------|--------------------------|-----------|---|
| September 2, 2022 | IGI Report No LG542205241 | 2.03 CARATS | G | VS 2 | 69% | 66% | Thick | Pointed | EXCELLENT | EXCELLENT | NONE | LABGROWN IGI LG542205241 | Comments: | This Laboratory Grown Diamond was created by Chemical Vapor Deposition (CVD) growth process and may include post-growth treatment. Type IIa |
| CUT CORNERED RECT. MODIFIED | 8.68 X 6.20 X 4.28 MM | Color Weight | Color Grade | Clarity Grade | Depth | Table | Girdle | Culet | Polish | Symmetry | Fluorescence | Inscription(s) | Comments: | |