



GRADING SCALES

Table with 5 columns for Color Grading Scale (CL, NC, FT, VLT, LT) and 5 columns for Clarity (10x) Grading Scale (FL, IF, VVS, VS, SI, I).

The laboratory grown diamond described in this Report ("Report") has been graded, tested, analyzed, examined and/or inscribed by International Gemological Institute (IGI). A laboratory grown diamond is one that has essentially the same chemical, physical and optical properties as a mined diamond...

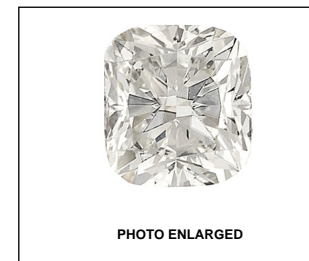
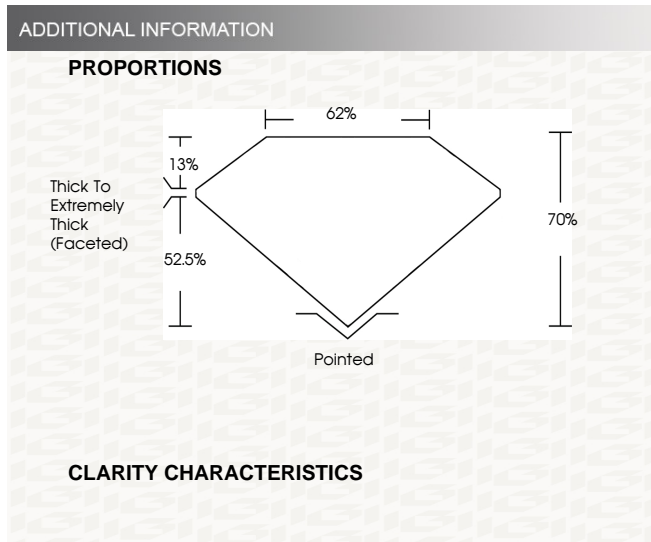
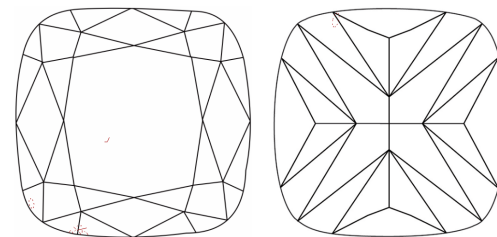


PHOTO ENLARGED



CLARITY CHARACTERISTICS



KEY TO SYMBOLS

Red symbols indicate internal characteristics. Green symbols indicate external characteristics.

This Report is subject to the terms and conditions

© IGI 2000, edition 2019 all rights reserved.



IGI GEMOLOGICAL REPORT

IGI LABORATORY GROWN DIAMOND GRADING REPORT

10/14/2020 IGI Report Number LG444015848

Shape and Cutting Style SQUARE CUSHION MODIFIED BRILLIANT

Measurements 8.23 X 8.16 X 5.71 MM

GRADING RESULTS

Carat Weight 3.00 CARATS

Color Grade F

Clarity Grade VS 2

ADDITIONAL GRADING INFORMATION

Polish EXCELLENT

Symmetry EXCELLENT

Fluorescence NONE

Inscription(s) LABGROWN IGI LG444015848

Comments: This Chemical Vapor Deposition (CVD) laboratory grown diamond is classified as Type IIa

IGI LABORATORY GROWN DIAMOND GRADING REPORT

10/14/2020 IGI Report Number LG444015848 Shape and Cutting Style SQUARE CUSHION MODIFIED BRILLIANT

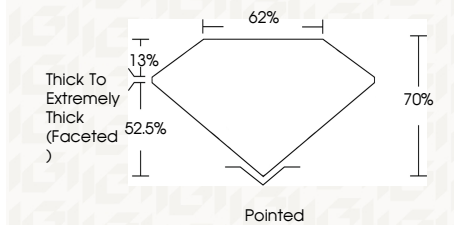
Measurements 8.23 X 8.16 X 5.71 MM

GRADING RESULTS

Carat Weight 3.00 CARATS

Color Grade F

Clarity Grade VS 2



ADDITIONAL GRADING INFORMATION

Polish EXCELLENT

Symmetry EXCELLENT

Fluorescence NONE

Inscription(s) LABGROWN IGI LG444015848

Comments: This Chemical Vapor Deposition (CVD) laboratory grown diamond is classified as Type IIa



IGI

10/14/2020 IGI Report No LG444015848 SQUARE CUSHION MODIFIED BRILLIANT 8.23 X 8.16 X 5.71 MM Carat Weight 3.00 CARATS Color Grade F Clarity Grade VS 2 Depth 70% Table 62% Thick To Extremely Thick Faceted Polished EXCELLENT Symmetry EXCELLENT Fluorescence NONE Inscription(s) LABGROWN IGI LG444015848 Comments: This Chemical Vapor Deposition (CVD) laboratory grown diamond is classified as Type IIa